

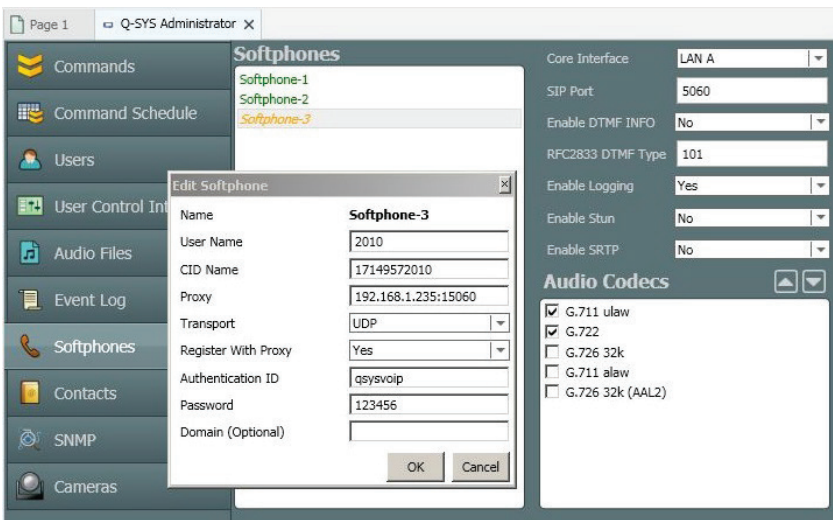


# Q-SYS Networked Systems Technical Notes

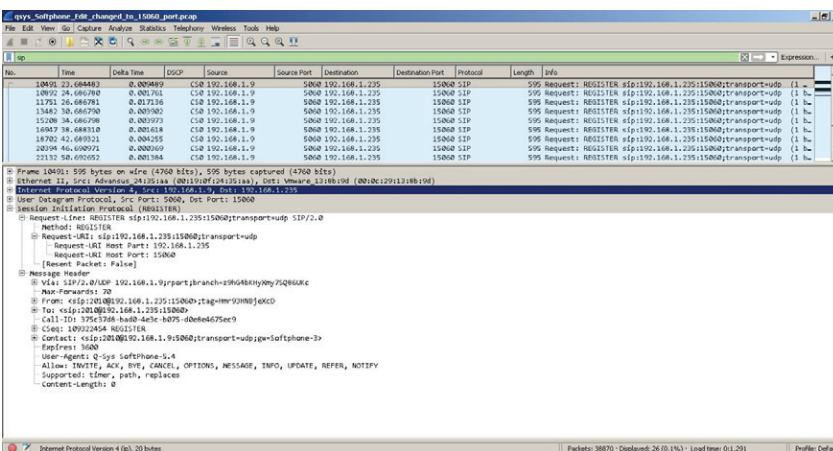
## Q-SYS Core Processors

### Assigning port numbers for Softphones

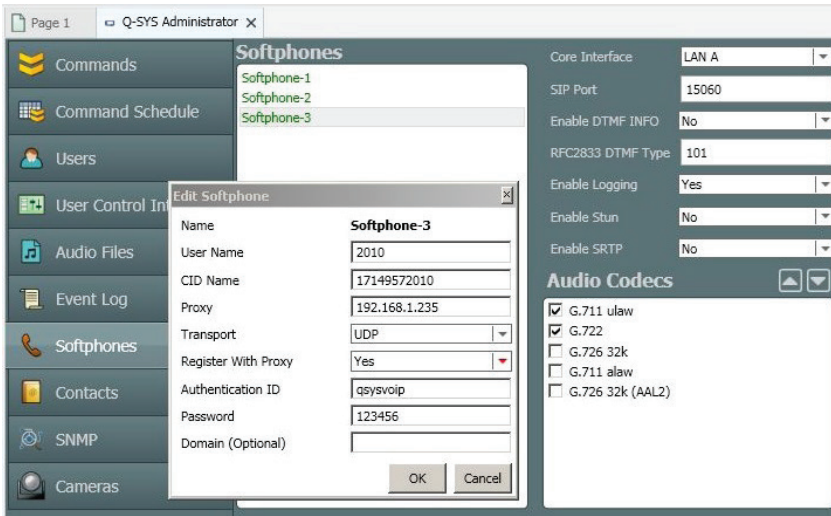
This technical note describes the process of assigning port numbers to Softphones in Q-SYS Administrator.



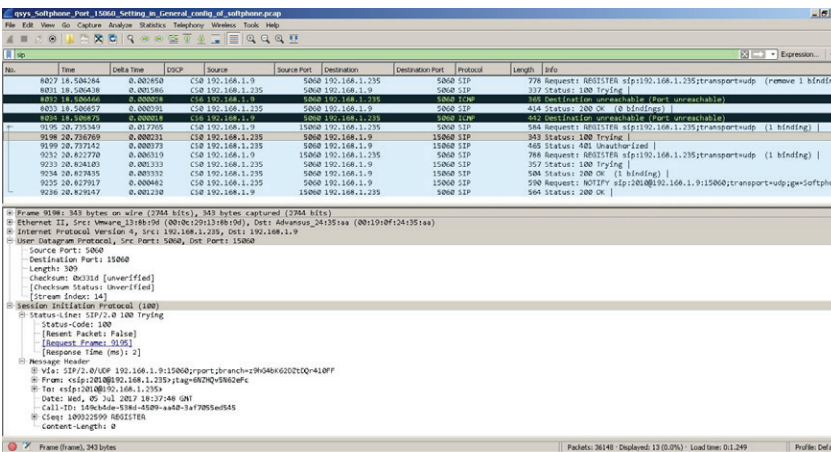
Use **Q-SYS Administrator** to add and configure Softphones. Double click on a Softphone to open its **Edit Softphone** window. Set the IP address and port number of the proxy, which is the SIP provider or gateway or PBX where the trunk is hosted. In this example, the IP address is 192.168.1.235 and the port number is 15060. Therefore, enter **192.168.1.235:15060** at **Proxy** and click **OK**. At **Register With Proxy**, selecting **Yes** will allow you to see the SIP registration packets in a PCAP.



A PCAP of the Softphone's SIP registration packets verifies that they are going to the right destination IP address and port.



In **Q-SYS Administrator**, also designate the **SIP Port**. The default setting is **5060**, which is the Q-SYS system's listening UDP port. In this example, we will set it to **15060** to use UDP. When the port number is changed, **Q-SYS Administrator** will warn **Settings have changed** and offer a choice of **Update** (to keep the changes) or **Cancel** (to discard the changes). Click **Update** to put the changes in effect.



The PCAP verifies that the source port for SIP registration packets in this example is port 15060 at IP address 192.168.1.235.