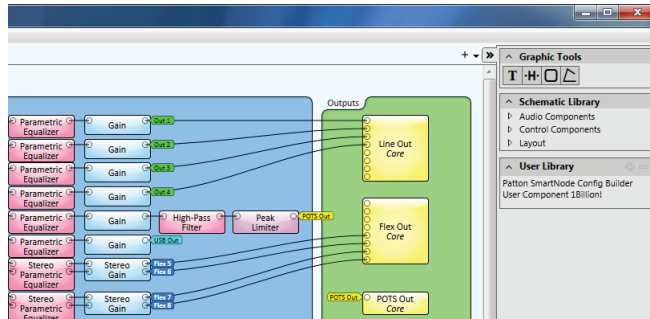


# Technical Notes

## Q-SYS Designer



### Installing and managing plugins and libraries

Aside from the executable files, Q-SYS uses three other types of file that are stored locally on the user's computer.

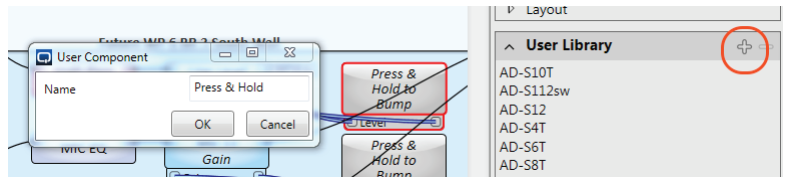
- **Designer** file, which has a filename extension of **.qsys** and contains a Q-SYS design.
- **Library** file, which has a filename extension of **.quc** and contains settings for custom Q-SYS components that appear in the User Library.
- **Plugin** file, which has a filename extension of **.lua** and is a LUA script written by a programmer to mimic built-in Q-SYS objects.

#### Designer files

Starting with version 5.0 of Q-SYS Designer, the Installer will place two sample or default Q-SYS design files in the folder **C:\Users\Public\Documents\QSC Audio\Q-Sys Designer 5.0\**. These are basic starter designs for creating conference system using the Q-SYS Acoustic Echo Cancellation (AEC) and either POTS or VoIP.

#### Library files

You can create a Library file for a component in a design. This will allow you to easily use the same component and configuration in other designs or even share with other Q-SYS users.



To do so, select the component in the Q-SYS design and click the plus sign, "+," on the User Library. Give the component a name and click OK. This will create a user component in the User Library and also create a corresponding Library file on the computer's storage in the folder **C:\Users\%USERPROFILE%\Documents\QSC Audio\Q-Sys Designer\User Components**. You may copy and distribute this file via e-mail, flash drive, or file sharing services such as Dropbox.

If you receive a Library file and wish to include it in your User Library, simply copy it to the User Components folder mentioned above. The next time you open or restart Q-SYS Designer, it will automatically install into the User Library.

## Plugin files

The Q-SYS Designer installer does not automatically create a Plugins folder, so if you wish to use LUA scripts or plugins, you will have to create this folder: **C:\Users\%USERPROFILE%\Documents\QSC Audio\Q-Sys Designer\Plugins**

If you receive a Plugin file and wish to use it, place it into this folder. If you don't see your plugin listed in the Schematic Library in Q-SYS Designer, check that the file was placed into the correct folder.

NOTE: In Q-SYS Designer version 4.1.31 and later ones, any Library or Plugin objects placed on the Schematic pages will be included in the design file. This simplifies sharing and distribution of design files.

