



unIFY Control Panel

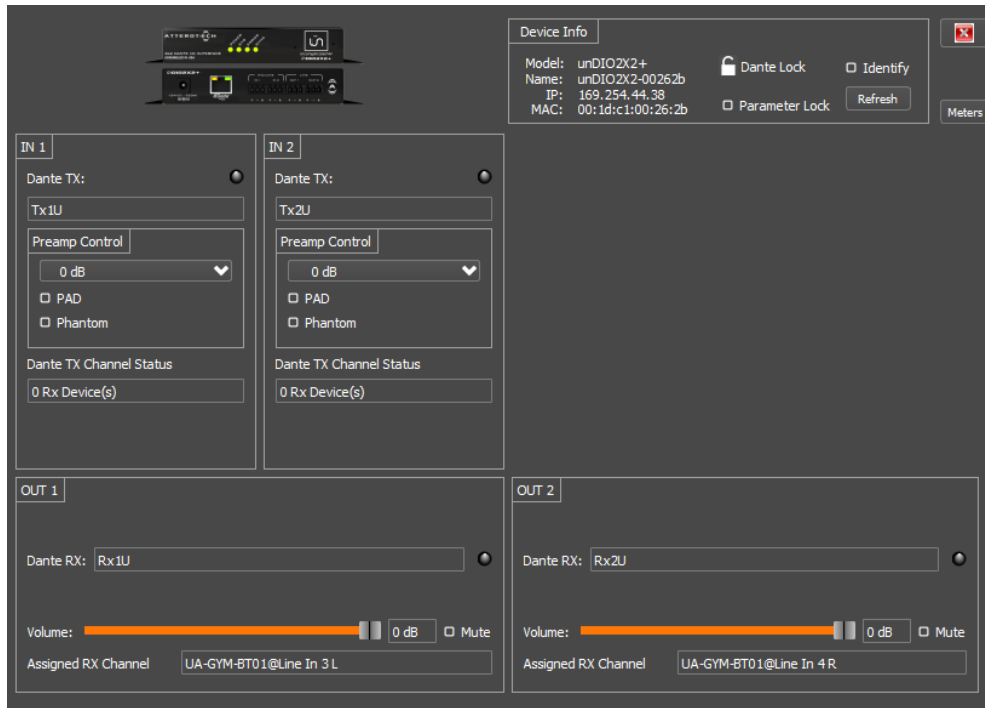
unDIO2x2+ Configuration



QSC, LLC • 1675 MacArthur Boulevard • Costa Mesa, CA 92626
Ph: 800/854-4079 or 714/957-7100 • Fax: 714/754-6174

© 2020 QSC, LLC all rights reserved. QSC and the QSC logo are registered trademarks of QSC, LLC in the U.S. Patent and Trademark office and other countries. All other trademarks are the property of their respective owners. Patents may apply or be pending.

www.qsc.com

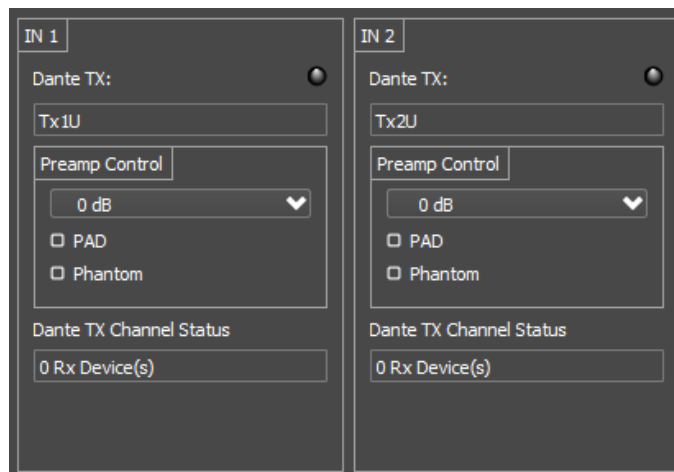


The configuration form for the unDIO2x2+ is organized into the following key sections:

- Inputs
- Outputs

**Note: Any changes made to device settings will only persist through a reset or loss of power to the device. To retain the settings, they must be manually stored to the "Default" preset using the "Save Presets" feature in unIFY Control Panel.*

Inputs



Dante™ TX

This text field reports the Dante™ transmit channel name shown on the Dante™ network for the corresponding analog input channels.

**Note: This field is non-editable. To edit the channel names, use the device list view control or us Dante™ Controller.*

Signal Presence

The indicator to the far right of Dante Tx label is a signal presence indicator for that channel. It will only be active if "Metering" is enabled for the device. The table below lists the indicator colors and their meaning:

Grey	Metering disabled, channel is muted, or receiving audio at less than -61dbFS
Green	Channel is receiving audio between -61dbFS and 0dbFS
Red	Channel is clipping

**Note: The metering function polls the device to get the data and this makes it network intensive. Metering should only be enabled when it's needed. It should not be turned on and left on.*

Preamp Control

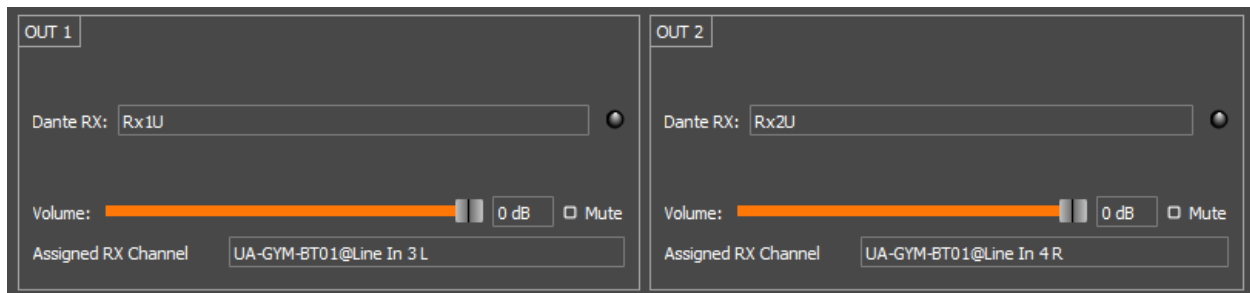
The Preamp Control section allows the user to adjust the microphone preamp gain settings, enable a -12dB pad and set the phantom power state for the corresponding inputs. Gain settings available are 0dB, +15dB, +30dB, and +45dB. The "Pad" option can be applied to any gain level and applies an attenuation of 12dB to the audio signal.

Dante™ TX Channel Status

This text field reports the number of active Dante™ receive devices for the corresponding transmitter channel. If no devices are subscribed to the transmitter channel the text field will report *None*.

**Note: This is a read-only field and any channel routing configuration must be performed within Dante™ Controller*

Outputs



The screenshot displays two output channel configurations side-by-side:

- OUT 1:** Dante RX: Rx1U, Volume: 0 dB, Mute (checkbox), Assigned RX Channel: UA-GYM-BT01@Line In 3 L
- OUT 2:** Dante RX: Rx2U, Volume: 0 dB, Mute (checkbox), Assigned RX Channel: UA-GYM-BT01@Line In 4 R



Dante™ RX Channel Name

This text field reports the Dante™ receive channel name shown on the Dante™ network for corresponding analog output channels.

**Note: This field is non-editable. To edit the channel names, use the device list view control or use Dante™ Controller.*

Signal Presence

The indicator to the far right of Dante Rx field is a "signal presence" indicator for that channel. It will only be active if "Metering" is enabled for the device. The table below lists the indicator colors and their meaning:

Grey	Metering disabled, channel is muted, or receiving audio at less than -61dbFS
Green	Channel is receiving audio between -61dbFS and 0dbFS
Red	Channel is clipping

**Note: The metering function polls the device to get the data and this makes it network intensive. Metering should only be enabled when it's needed. It should not be turned on and left on.*

Volume Control

The volume control allows the user to adjust the audio level of the corresponding analog output. Volume settings are between 0 and -60dB.

**Note: The volume control does not apply any gain to the output signal. It is only an attenuation control.*

Mute Control

The mute control allows the user to mute/unmute the corresponding analog output.

RX Channel Assignment

This text field reports the currently assigned Dante™ transmit channel to the corresponding receive channel. If no channel is assigned, the text field will report "None"

**Note: This field is non-editable. To edit the channel names, use the device list view control or use Dante™ Controller.*