



unFY Control Panel

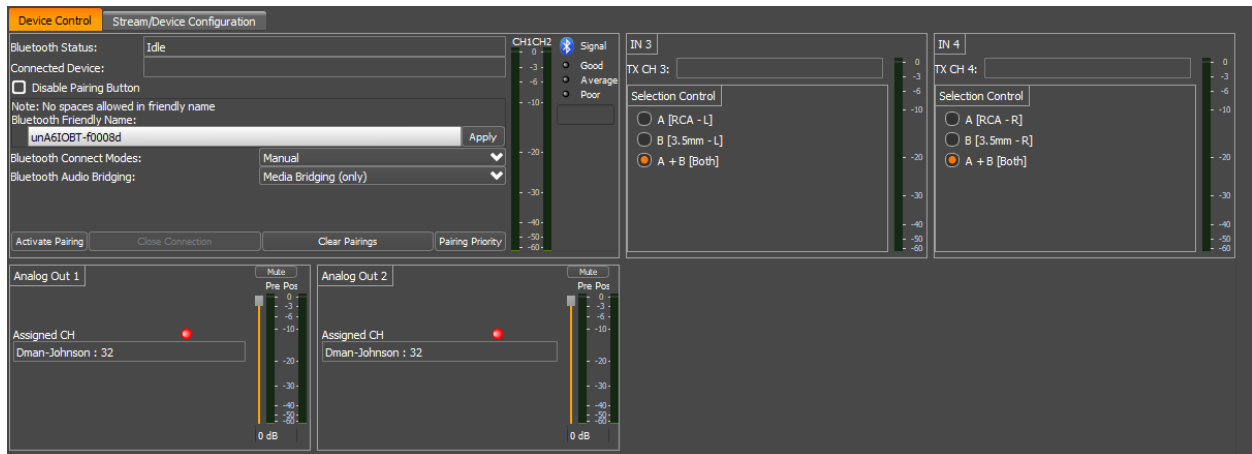
unA6IO-BT Configuration



QSC, LLC • 1675 MacArthur Boulevard • Costa Mesa, CA 92626
Ph: 800/854-4079 or 714/957-7100 • Fax: 714/754-6174

© 2020 QSC, LLC all rights reserved. QSC and the QSC logo are registered trademarks of QSC, LLC in the U.S. Patent and Trademark office and other countries. All other trademarks are the property of their respective owners. Patents may apply or be pending.

www.qsc.com

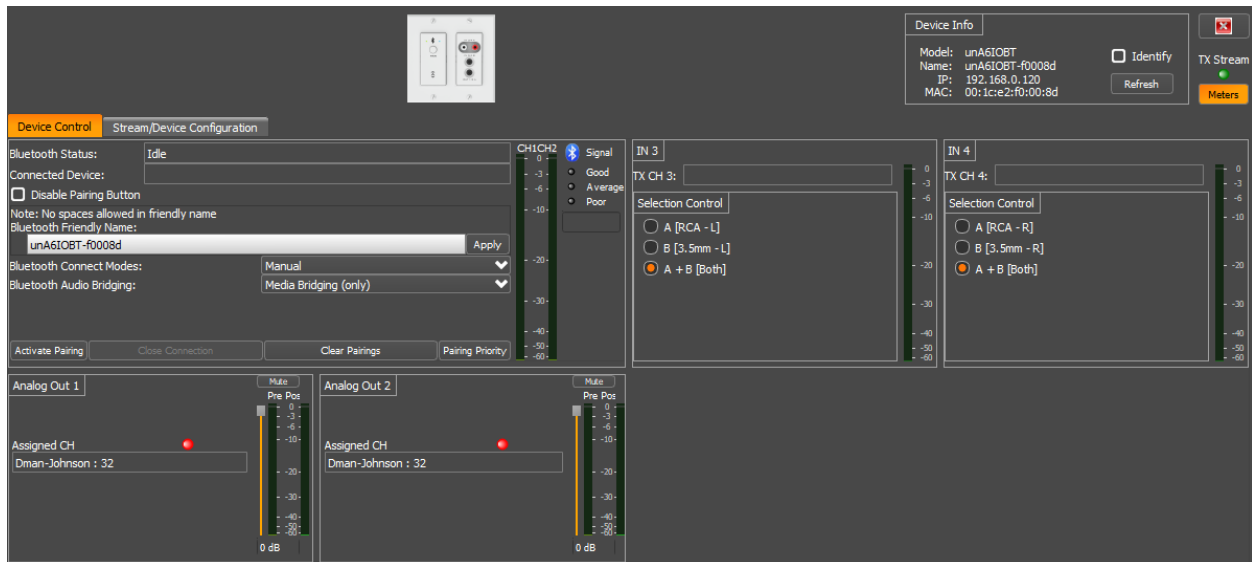


The configuration form for the unA6IO-BT is organized into the following key sections:

- Device Control – Comprises the analog input audio parameters
- Stream/Device Configuration – Comprises of the network audio parameters

***Note:** Any changes made to device control settings will only persist until power is cycled on the device. To retain the settings, they must be stored to Preset 0 using the “Save Presets” feature within unIFY Control Panel.

Device Control



Bluetooth Status

This field reports the Bluetooth® interface status. The possible states are “Idle”, “Discoverable” and “Connected”. Changes to the device’s Bluetooth® related parameters are disabled in all states except the “Idle” state.



Signal

This is a reporting status that gives the Bluetooth® signal strength which the unD6IO-BT is receiving from the device which it is connected. The status is reporting live when the plug-in is open and has a Bluetooth® connection; reporting “Good”, “Average”, and “poor”.

Connected Device

This field reports the name of the connected Bluetooth® device.

Disable Pairing Button

This checkbox allows the installer to lock out the front panel pairing functionality for applications that require restricted access to the audio system.

Bluetooth® Friendly Name

The Name field allows the installer to configure an appropriate Bluetooth® friendly name that will be visible to users on their Bluetooth® equipped devices when attempting to connect. This allows for multiple unA6IO-BT devices to be placed in close proximity and still provide clarity to users trying to connect to a particular unA6IO-BT device and audio system.

Bluetooth® Connect Modes

Manual Mode

This usage model is intended for applications where casual users of a public venue (sports bar, spa, stadium luxury box, fitness center) have access to connect their devices to the audio system but headaches are minimized by eliminating automatic reconnect and pairing history features.

In this mode, users connect their Bluetooth® audio enabled smart device by simply pressing the front panel PAIR button. The blue Bluetooth® status LED will begin flashing to indicate that the unD6IO-BT is now visible to other Bluetooth® devices and accepting pairings. This pairing period lasts 30 seconds after which the status LED will stop flashing and turn off and the unD6IO-BT will disable its Bluetooth® interface.

**Note: The default friendly name visible to other devices is unD6IO-BT. This name can be customized by the installer using the unIFY Control Panel software.*

If a successful pairing is made during the pairing period, the status LED will stop flashing and turn constantly on.

To disconnect a Bluetooth® device from the unD6IO-BT, press and hold the PAIR button for 5 seconds and then release it. The status LED will turn off, and the connection will be reset. Another device may now be connected by repeating the pairing process.

Reconnect Mode

In this mode, a previously paired device will be permitted to reconnect when in range of the unD6IO-BT without requiring the front panel button to be pressed but is limited to a single device and is intended for restricted/personal use.

Exclusive Mode

In this mode, the exclusively paired device will be permitted to reconnect when in range of the unD6IO-BT without requiring the front panel button to be pressed but is limited to a single device and is intended for restricted/personal use.



Any other pairing/connect requests beyond the first paired device is rejected. *Note: *This mode applies to both A2DP and HFP profiles.*

Audio Bridging

Media Bridging (only)

In this mode (A2DP), users may stream audio from media applications on the paired device. The user is protected from errant streaming of phone audio over Bluetooth® link.

Call Bridging (only)

In this mode (HFP), users may stream incoming/outgoing calls from the paired device using the system integrated inputs and outputs. The user is protected from errant streaming of media audio over Bluetooth® link.

Call and Media Bridging

In this mode, both profiles are available giving users the ability to control access of content (call/media) to the system from the paired device.

AVRCP Control

Many installed AV Systems in both residential and commercial markets feature control products with customizable user interfaces. With a connected Bluetooth® audio device as a source, it is desirable to have access to the device information and source content (artist/album) for use on the control system UI. Additionally, the end user of the system may control the source from any control panel that has this is useful if the device is left somewhere to charge and is out of reach to simply change songs or stop the audio playback.

Control access will be available for the following AVRCP pass through commands:

- Play
- Pause
- Stop
- Next Track
- Previous Track
- Volume Up
- Volume Down
- Mute

**Note: Some devices, such as iOS devices do not support AVRCP pass through volume control. In order to provide broad compatibility it is recommended that volume control be implemented by adjusting the unA6IO-BT Bluetooth® hardware rather than the remotely connected device.*

Activate Pairing

This function activates pairing mode on the device similar to pressing the front panel button.

Clear Pairings

This function clears the actively paired devices in the pairing list. This is generally not required but may help in resolving any connectivity issues that users experience.



Close Connection

This function remotely closes the active Bluetooth® connection and function is only active when the Bluetooth® status is “Connected”.

Clear Pairings

This function remotely closes the active Bluetooth® connection and function is only active when the Bluetooth® status is “Connected”.

Pairing Priority

This allows the user to identify devices which have paired to the unA6IO-BT and establish priority devices with the device. A priority paired device is one that will be retained in the unA6IO-BT’s pairing list and not be dropped, should the paired devices exceed the pairing list capacity; the oldest paired device that are not priority will be removed first.

Input Select Control

The unA6IO-BT features an input selection option for the line level analog inputs routed to Dante™ transmitter channels 3 and 4. To select the active input, click on the desired radio button in the Input Selection control.

The selectable options are:

- Input A (RCA Input)
- Input B (3.5mm TRS input)
- A+B (Mono sum of both inputs A and B)

Volume Control

The volume control allows the user to adjust the audio level of the corresponding analog output. Volume settings are between 0 and -60dB.

***Note:** *The volume control goes not apply any gain to the output signal. It is only an attenuation only control.*

Mute Control

The mute control allows the user to mute/unmute the corresponding analog output.

RX Channel Assignment

This text field reports the currently assigned AES67 transmit channel assigned to the corresponding output. To change the channel being supplied to a particular output, use the “AES67 Rx Setup” section on the “Stream Configuration” tab.

Metering

All unA6IO-BT units have an option that allows metering. The meters are shown for both inputs and outputs and the output meters show both pre- and post- output volume/mute control levels but they will only operate when the metering function is enabled. The metering data is disabled by default. It is recommended that

the metering only be turned on for diagnostics/debug purposes but is then turned off for normal operation especially if there are multiple units on the network.

Stream Control

The stream control tab shows the various settings to configure both transmit streams for the unA6IO-BT and receive streams to the unA6IO-BT. There are also some device settings such as device name and IP address configuration.

AES67 TX Setup

The parameters in this section are used to define the transmit stream from this device. By default, the audio transmitter is turned off. The stream comprises of five channels. The first four channels are the audio from the local analog inputs in order and the fifth is a diagnostic pilot tone.

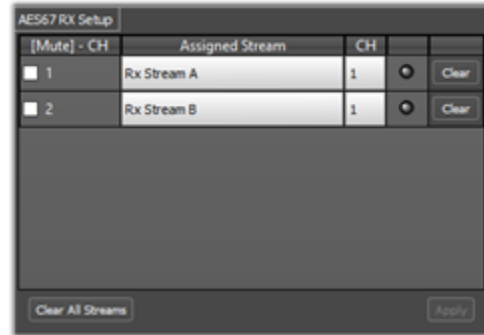
Each stream has a name to identify it and a multicast IP address that the stream uses. The name is 32 characters long and by default is the name of the device itself. This can be changed if required but needs to be unique. The stream IP address is the multicast IP address that the stream will be sent to. This IP address must be a unique multicast address on the network.

***Note:** The software does not check the name or IP address is unique and it therefore up to the user to ensure that these values are not used again on other devices.

Check the “Enable” option to setup the transmit stream. When active and correctly working, the stream status indicator will show green.

AES67 RX Setup

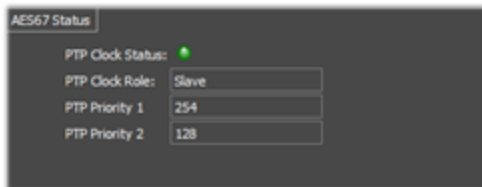
The AES67 Rx setup section allows the user to see and/or select which stream and specifically which channel within a stream is allocated to each analog output. For each output, the current settings for assigned stream and channel are shown, as well as an indication if the assigned stream is active and also if that output is muted or not (the mute control is a duplicate of the output mute control on the Device Control tab).



Audio channels may be assigned to an output in two ways:

1. The drag and drop method - By clicking the “+” sign next to a stream name in stream list on the lower left hand side of the GUI, the stream will expand to show its individual channels. With the stream expanded, click and drag that exact channel from the desired stream and drop it onto the desired output. Doing so will populate both the assigned stream and channel number fields for that output channel.
2. Manually – Manually type the stream name and channel number in the boxes provided

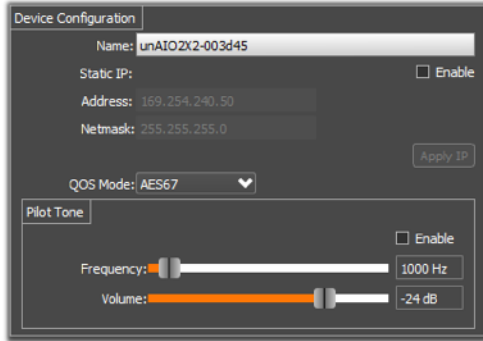
Once the correct streams have been allocated, click the “Apply” button to apply the changes to the unit. If the stream is being received correctly, the stream indicator will turn green. If a stream is allocated but not received for some reason, the indicator will show red.



AES67 Status

The fields indicated in this section are for monitoring purposes only. The PTP Clock Status indicates if the device is sync'd to the main system clock. A green indicator show that it is. The clock role indicates if the device has been elected to be a clock master or is just a clock slave. The two priority fields show what the device priorities are set too which form part of the clock master election process.

Device Configuration



The device configuration shows the various device wide settings. This includes the devices name and IP address, and the settings for the pilot tone.

The device name defaults to unA6IO-xxxxxx where “xxxxxx” is the last six digits of the devices MAC address. The name can be changed and changes will be applied by pressing “Enter” or by selecting a different control than the device name edit box.

***Note:** Changing the name will force a reboot of the device.

The device IP address configuration indicates the current IP setup. The devices IP can be configured as either static or dynamic. Changes to the setup are applied using the “Apply IP” button.

Q-LAN/AES67 audio and Dante™ audio require differing QoS settings and switches can only be configured to deal with traffic QoS in one way. In order to make sure that QoS settings on the switch can apply equally to both Q-LAN/AES67 and Dante™ traffic, the QoS mode can be specifically selected. Use the following table to select an appropriate value.

Network Traffic	QoS Setting
Q-LAN only	PTPV2:46 Audio:34 (AES67)
Q-LAN + AES67	PTPV2:46 Audio:34 (AES67)
Dante™ only	PTPV2:56 Audio:46 (Dante™)
Dante™ + Q-LAN	PTPV2:56 Audio:46 (Dante™)
Dante™ + Q-LAN + AES67	PTPV2:56 Audio:46 (Dante™)

The pilot tone settings are used to configure an additional diagnostic tone channel that is included in the transmit stream. If enabled, an internally generated sine wave of the given frequency and volume is added to the transmit stream in addition to the two analog input audio channels.