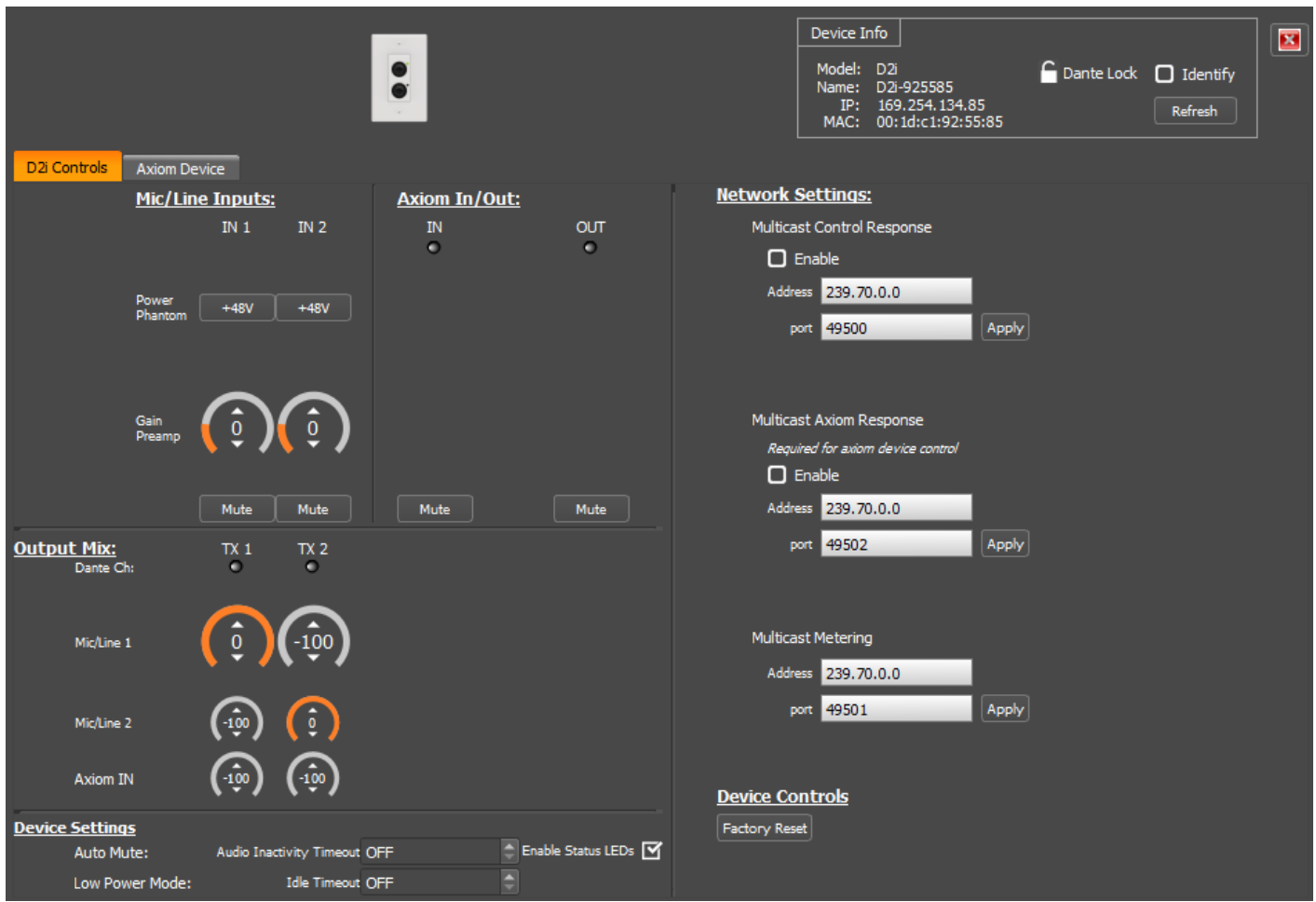




unIFY Control Panel - Axon D2i

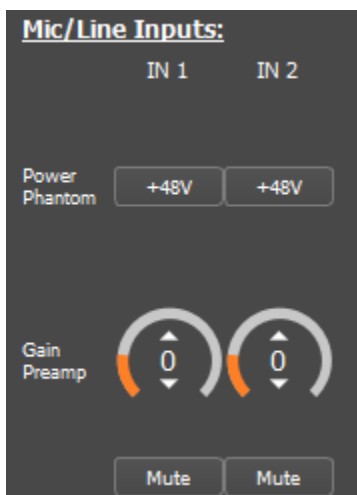


The configuration for the Axon D2i is organized into the following key sections:

- D2i Controls
- Axiom Device

D2i Controls

Mic/Line inputs



Phantom Power

Allows the user to adjust phantom power states for the corresponding inputs.

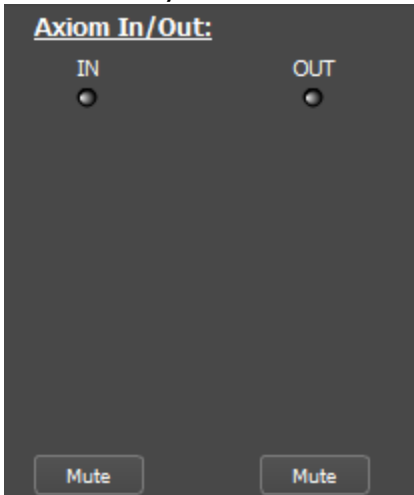
Preamp Gain

Allows the user to adjust gain states for the corresponding input. Gain settings are between -8 and 34dB.

Mute Control

Allows the user to mute/unmute the corresponding input.

Axiom In/Out



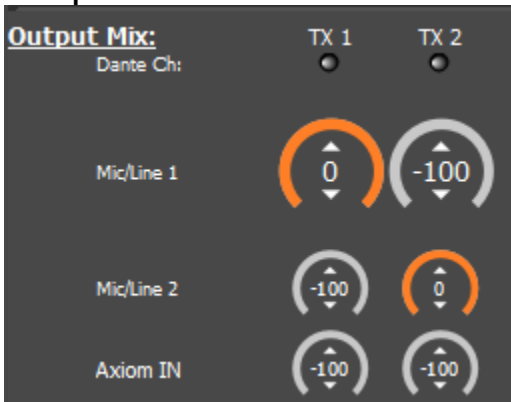
In/Out

Displays signal presence from a connected Axiom device.

Mute Control

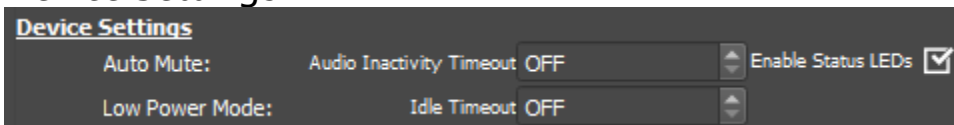
Allows the user to mute/unmute the corresponding input/output.

Output Mix



The D2i contains a matrix mixer allowing the user to send the desired input signal and level to the corresponding TX stream.

Device Settings



Auto Mute

Allows the user to set a mute state on the TX outputs after a period of audio inactivity. Settings are between 60 and 600 seconds.

Low Power Mode

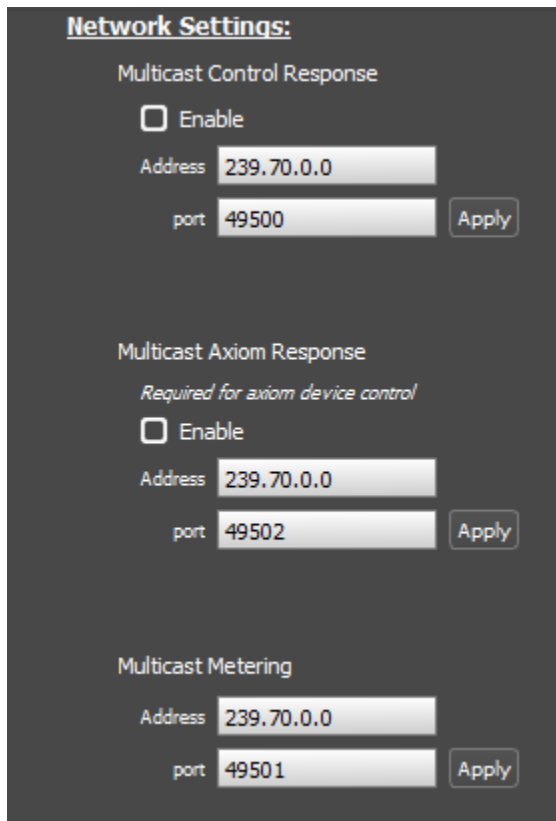
The D2i supports a low power mode to minimize power consumption and internal device temperatures. This can be set by the user to activate between 10 and 60 minutes.

Note: Automatic Low Power Mode is off by default and is not recommended if live control/monitoring of settings is needed.

Enable Status LEDs

Allows the user to enable/disable the status LEDs on the front of the D2i.

Network Settings



Network Settings:

Multicast Control Response

Enable

Address

port

Multicast Axiom Response

Required for axiom device control

Enable

Address

port

Multicast Metering

Address

port

Multicast Control Response

Allows the D2i to transmit asynchronous control messages triggered by “Set” type commands to a configured multicast address and port.

- **Enable** - Turns Multicast Control Response On/Off
- **Address** - Allows user to set custom multicast IP
- **Port** - Allows user to select custom port

Multicast Axiom Response

Allows the D2i to transmit outgoing Axiom port messages to a configured multicast address and port. Without enabling, plugin support to control Axiom port devices will not be available.

- **Enable** - Turns Axiom multicast control response On/Off
Note: This does not affect audio on the Axiom bus. Only pass through control.
- **Address** - Allows user to set custom multicast IP
- **Port** - Allows user to select custom port

Multicast Metering

Allows the D2i to transmit metering messages to a configured multicast address and port.

- **Address** - Allows user to set custom multicast IP
- **Port** - Allows user to select custom port

Axiom Device

This tab allows users to connect and control a second Axiom device. Multicast Axiom Response must be enabled to control other devices. The tab will appear with the unIFY Control Panel plugin for the connected device. See unIFY Control Panel manual for connected device for operating instructions.