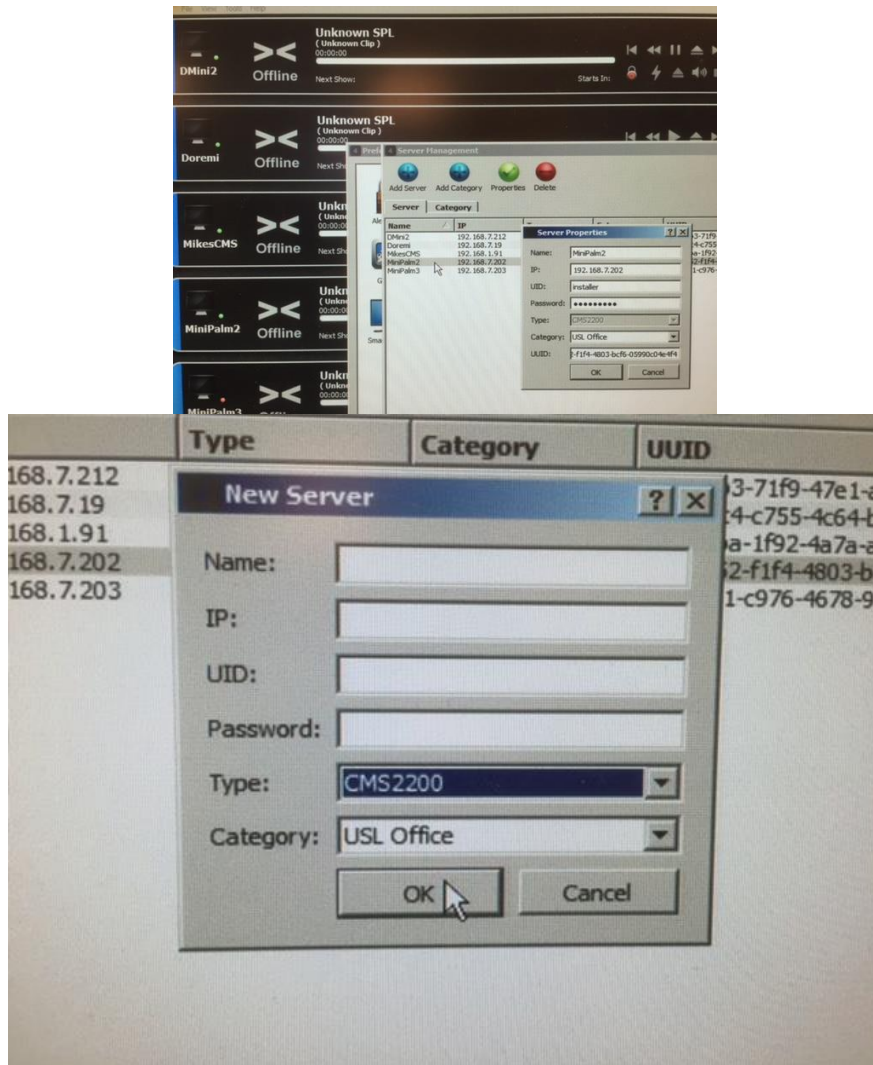


GDC 4.0 / CMS2200 – FAQ

Setup of CMS-2200 server (System > Preferences > Server Management > Add Server).

1. Select CMS-2200 (as Type)
2. IP: ip of projector
3. Must add UID (user) and password. manager, installer applicable.
4. Select Ok
5. Note: If server is rebooted, GDC must be reconnected as permissions are enforced.



Setup of Generic Server

1. Select DCServer as Type
2. IP is ip of aux port of CMS-2200
3. Select Ok

