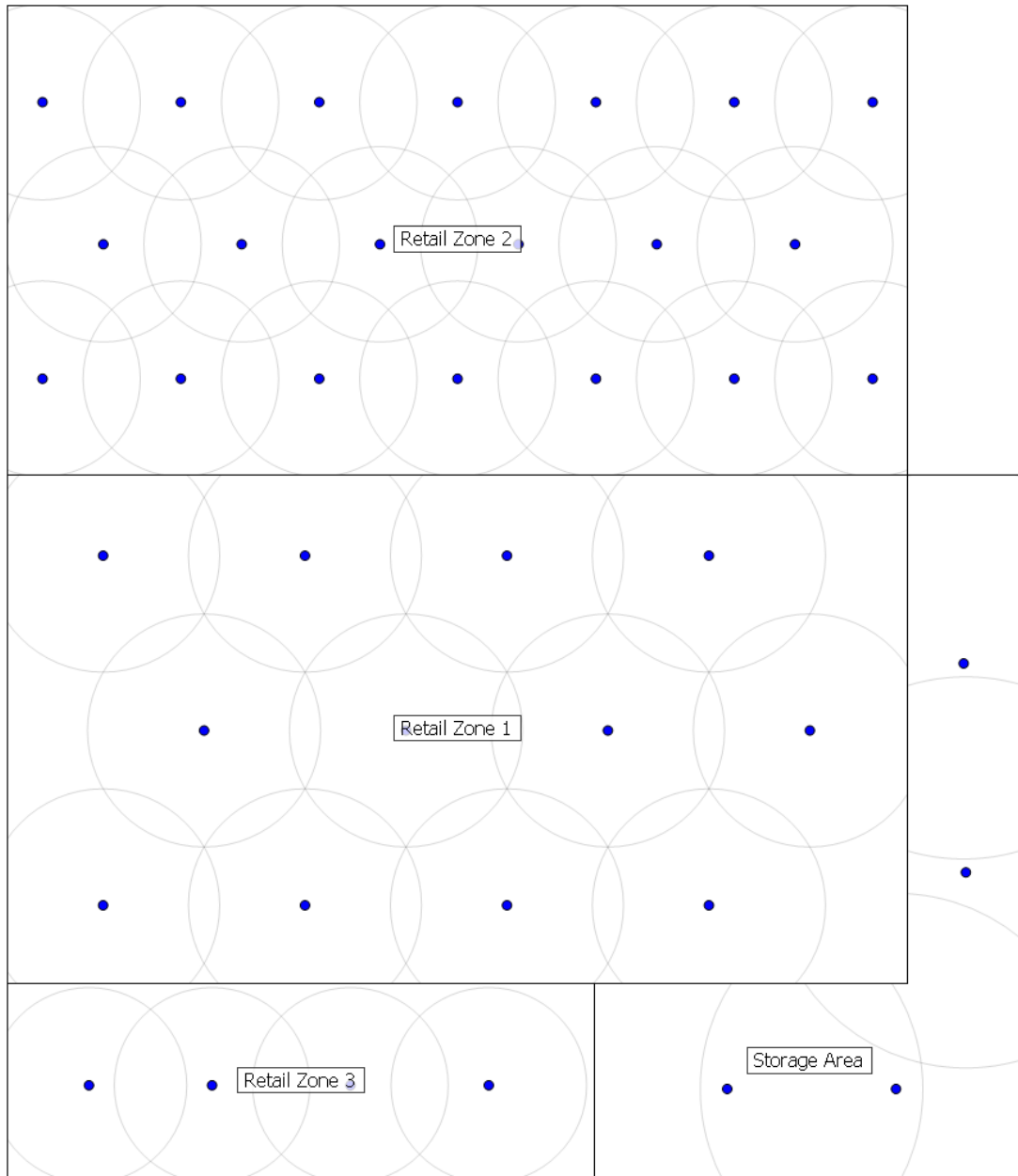


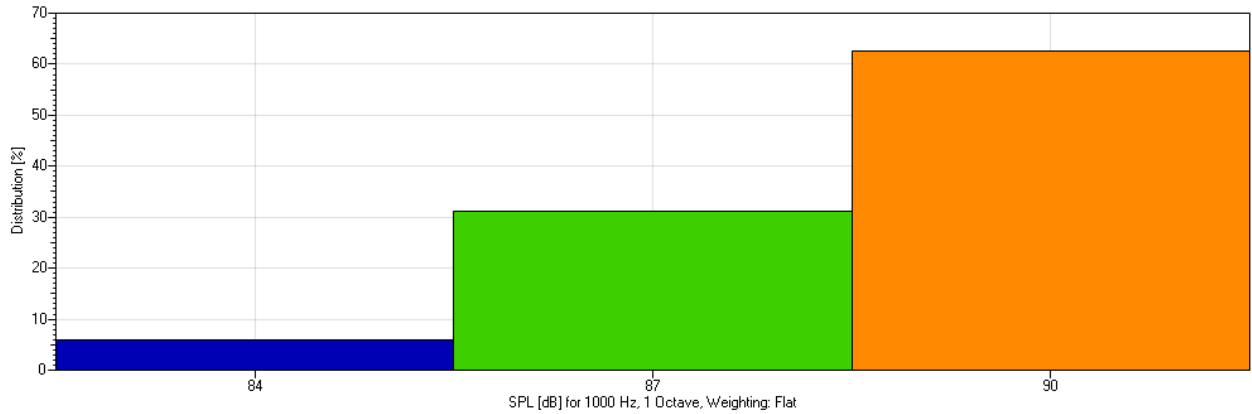
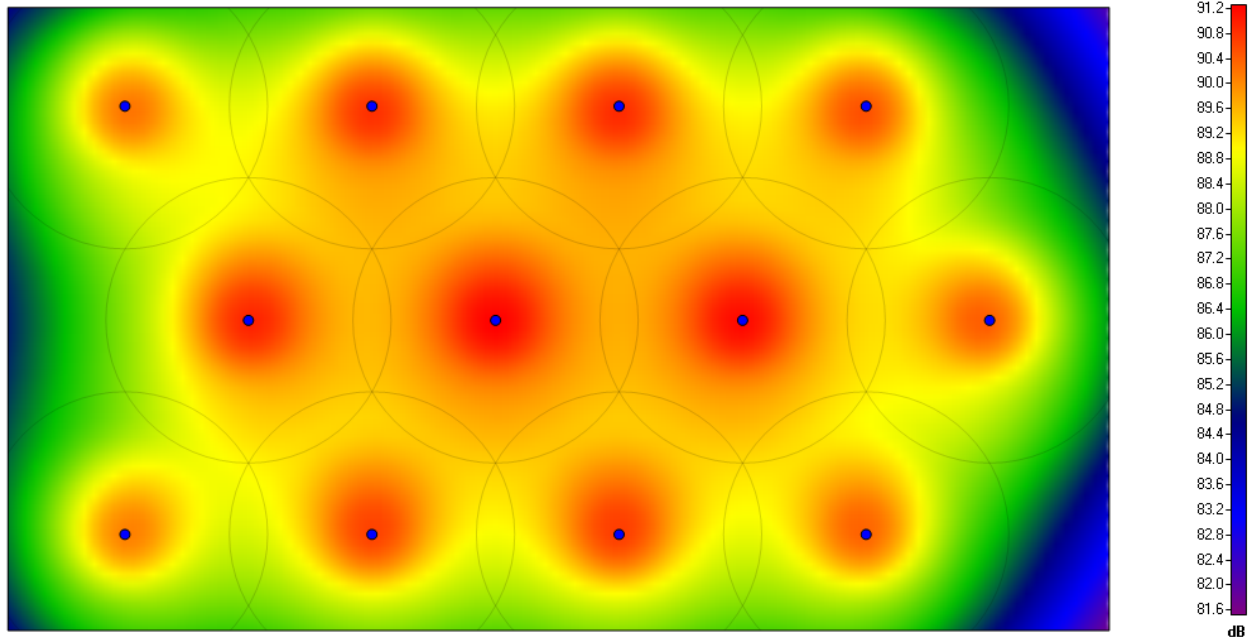
## Project Information

<b>Title:</b>	Retail System Model	
<b>Author:</b>	Joe Etrick	
<b>Company:</b>	QSC Audio Products, LLC	
<b>Notes:</b>	This project was modeled as an example of the use of the DSP322ua digital signal processor and accessories in a typical Retail application. It was modeled in EASE Address which is available on the QSC website.	
<b>Temperature:</b>	68.0°F	
<b>Pressure:</b>	Standard (29.8 inHg)	
<b>Humidity:</b>	Standard (60%)	
<b>Mapping:</b>	1000 Hz (1 Octave), Weighting: Flat	
<b>Input Signal Type:</b>	Program (IEC 60268)	
<b>Calculation Accuracy:</b>	Fast Approximation	
<b>Summary Loudspeakers:</b>	<b>Amount</b>	<b>Type</b>
	12	AD-S52T (QSC Audio)
	4	AD S28T Sub (QSC Audio)
	20	AD S32T (QSC Audio)
	8	AD-C42T (QSC Audio)

## Layout Overview



### Room: Retail Zone 1



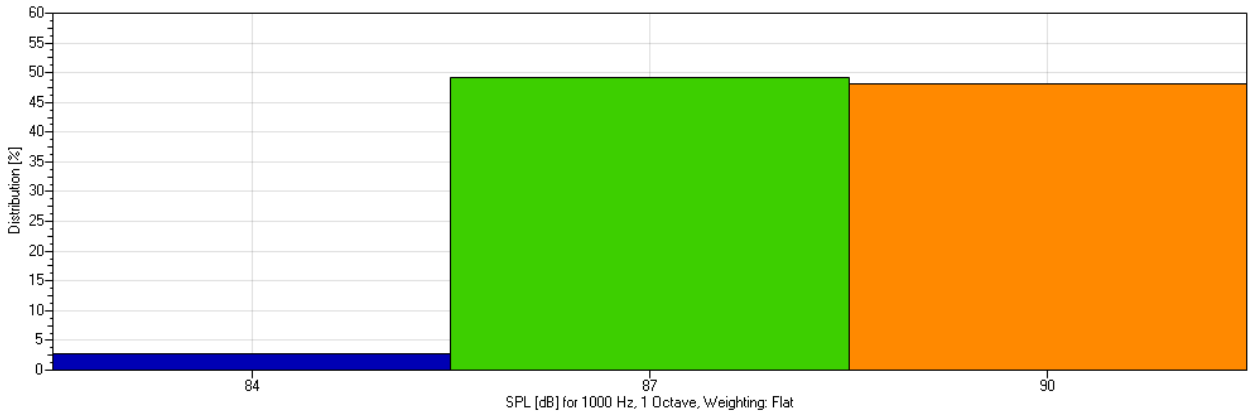
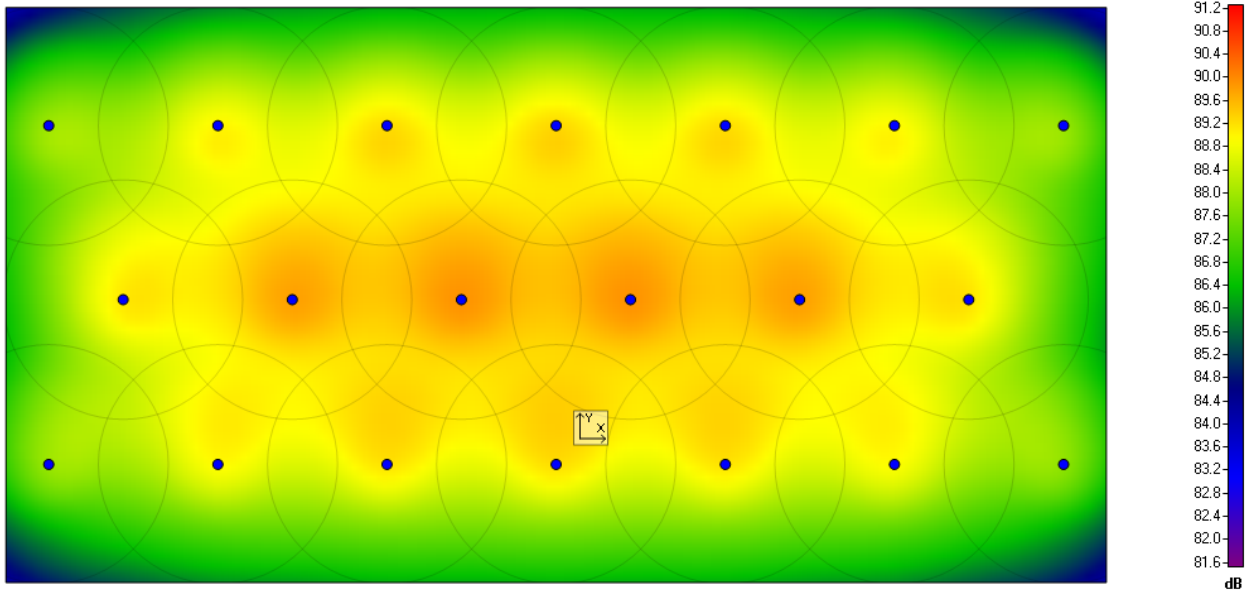
**Label:** Retail Zone 1  
**Room Height:** 9.00 ft  
**Ear Height:** 4.00 ft  
**Network Voltage:** 70.7 V  
**Power Consumption:** 180W

Summary Loudspeakers:	Amount	Type
	12	AD-S52T (QSC Audio)

Room Layout:	Nr.	X [ft]	Y [ft]
	1	7.93	9.16
	2	7.93	35.16
	3	-38.07	35.16
	4	-38.07	9.16

<b>Loudspeakers:</b>	<b>Nr.</b>	<b>Type</b>	<b>X [ft]</b>	<b>Y [ft]</b>	<b>Tap Settings</b>
	1	AD-S52T (QSC Audio)	-33.19	31.05	15 W (US Standard)
	2	AD-S52T (QSC Audio)	-22.87	31.05	15 W (US Standard)
	3	AD-S52T (QSC Audio)	-12.55	31.05	15 W (US Standard)
	4	AD-S52T (QSC Audio)	-2.23	31.05	15 W (US Standard)
	5	AD-S52T (QSC Audio)	-28.03	22.11	15 W (US Standard)
	6	AD-S52T (QSC Audio)	-17.71	22.11	15 W (US Standard)
	7	AD-S52T (QSC Audio)	-7.39	22.11	15 W (US Standard)
	8	AD-S52T (QSC Audio)	2.93	22.11	15 W (US Standard)
	9	AD-S52T (QSC Audio)	-33.19	13.17	15 W (US Standard)
	10	AD-S52T (QSC Audio)	-22.87	13.17	15 W (US Standard)
	11	AD-S52T (QSC Audio)	-12.55	13.17	15 W (US Standard)
	12	AD-S52T (QSC Audio)	-2.23	13.17	15 W (US Standard)

### Room: Retail Zone 2



**Label:** Retail Zone 2  
**Room Height:** 9.00 ft  
**Ear Height:** 4.00 ft  
**Network Voltage:** 70.7 V  
**Power Consumption:** 150W  
**Summary Loudspeakers:**

Amount	Type
20	AD-S32T (QSC Audio)

**Room Layout:**

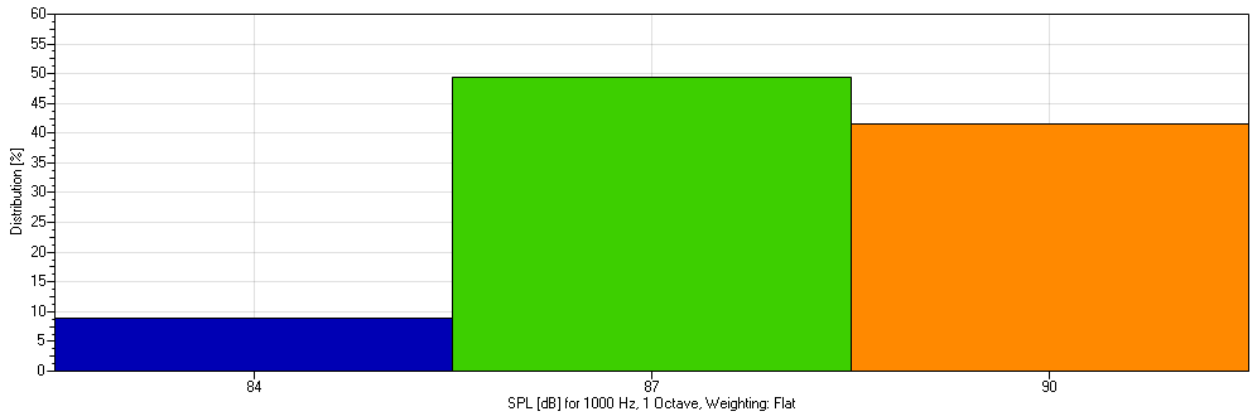
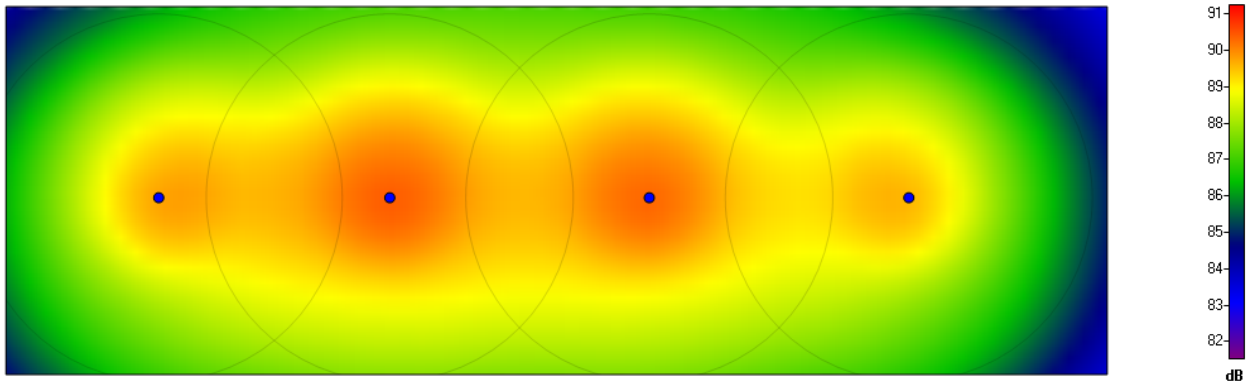
Nr.	X [ft]	Y [ft]
1	-24.00	18.00
2	22.00	18.00
3	22.00	-6.00
4	-24.00	-6.00

**Loudspeakers:**

Nr.	Type	X [ft]	Y [ft]	Tap Settings
1	AD-S32T (QSC Audio)	-22.21	13.07	7.5 W (US Standard)

2	AD-S32T (QSC Audio)	-15.14	13.07	7.5 W (US Standard)
3	AD-S32T (QSC Audio)	-8.07	13.07	7.5 W (US Standard)
4	AD-S32T (QSC Audio)	-1.00	13.07	7.5 W (US Standard)
5	AD-S32T (QSC Audio)	6.07	13.07	7.5 W (US Standard)
6	AD-S32T (QSC Audio)	13.14	13.07	7.5 W (US Standard)
7	AD-S32T (QSC Audio)	20.21	13.07	7.5 W (US Standard)
8	AD-S32T (QSC Audio)	-19.11	5.81	7.5 W (US Standard)
9	AD-S32T (QSC Audio)	-12.03	5.81	7.5 W (US Standard)
10	AD-S32T (QSC Audio)	-4.96	5.81	7.5 W (US Standard)
11	AD-S32T (QSC Audio)	2.11	5.81	7.5 W (US Standard)
12	AD-S32T (QSC Audio)	9.18	5.81	7.5 W (US Standard)
13	AD-S32T (QSC Audio)	16.25	5.81	7.5 W (US Standard)
14	AD-S32T (QSC Audio)	-22.21	-1.07	7.5 W (US Standard)
15	AD-S32T (QSC Audio)	-15.14	-1.07	7.5 W (US Standard)
16	AD-S32T (QSC Audio)	-8.07	-1.07	7.5 W (US Standard)
17	AD-S32T (QSC Audio)	-1.00	-1.07	7.5 W (US Standard)
18	AD-S32T (QSC Audio)	6.07	-1.07	7.5 W (US Standard)
19	AD-S32T (QSC Audio)	13.14	-1.07	7.5 W (US Standard)
20	AD-S32T (QSC Audio)	20.21	-1.07	7.5 W (US Standard)

### Room: Retail Zone 3



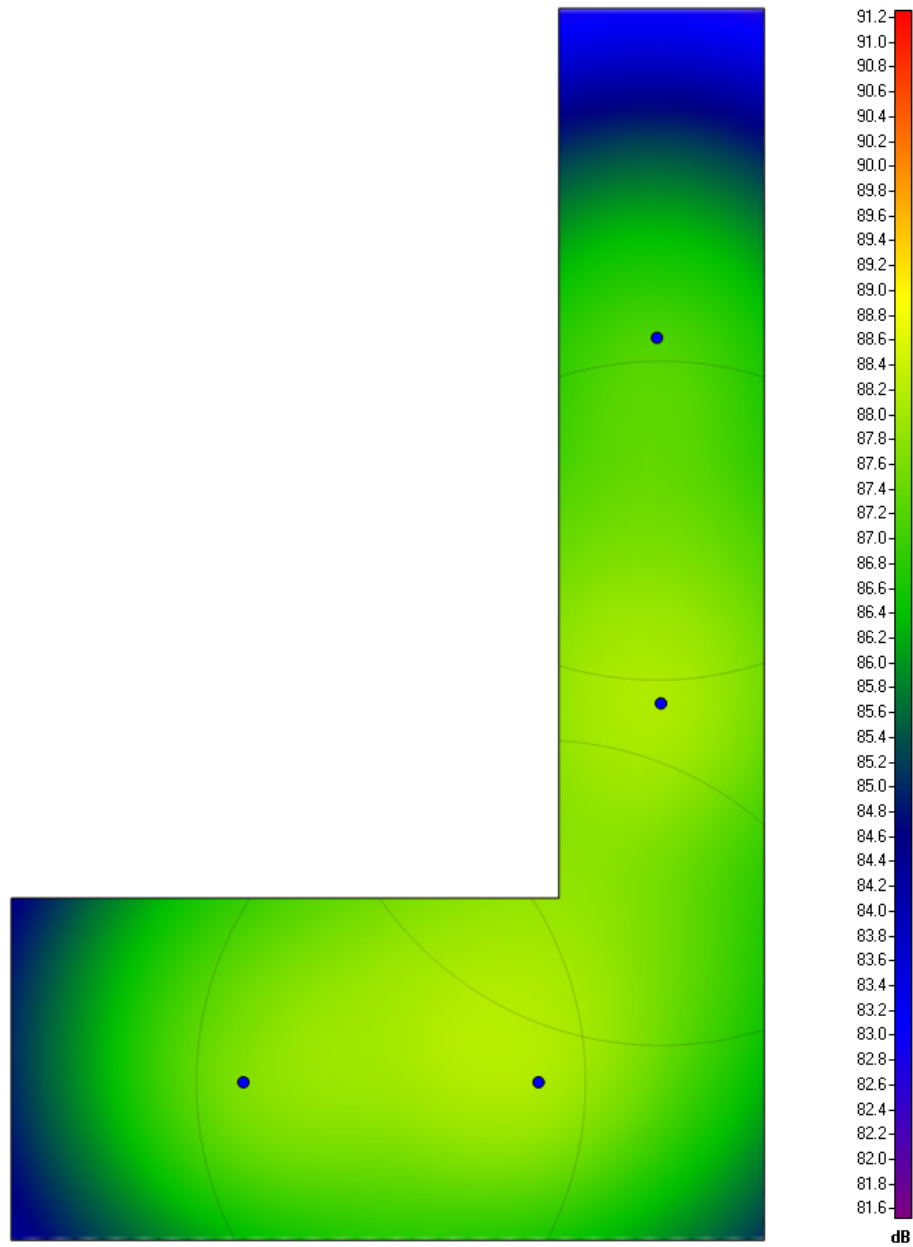
**Label:** Retail Zone 3  
**Room Height:** 9.00 ft  
**Ear Height:** 4.00 ft  
**Network Voltage:** 70.7 V  
**Power Consumption:** 60W

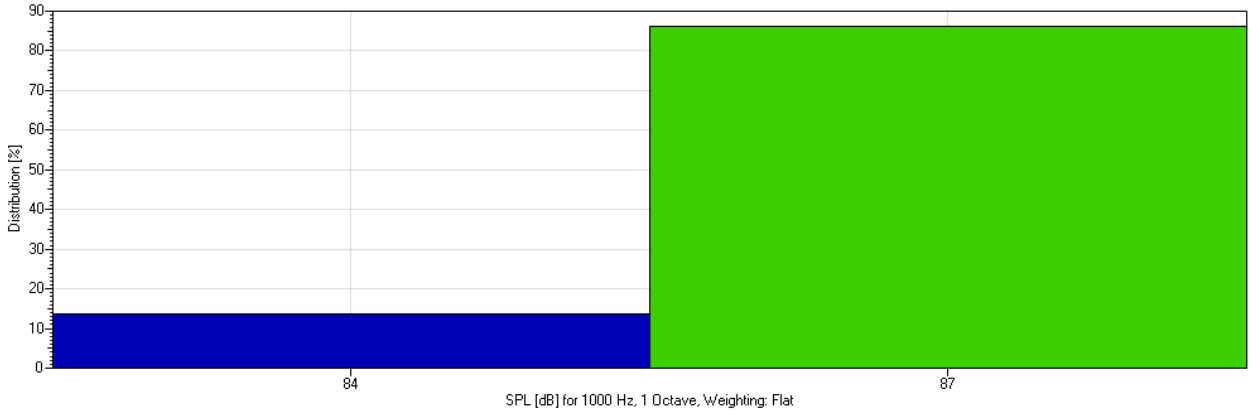
Summary Loudspeakers:	Amount	Type
	4	AD-C42T (QSC Audio)

Room Layout:	Nr.	X [ft]	Y [ft]
	1	-8.00	-38.00
	2	-8.00	-48.00
	3	-38.00	-48.00
	4	-38.00	-38.00

Loudspeakers:	Nr.	Type	X [ft]	Y [ft]	Tap Settings
	1	AD-C42T (QSC Audio)	-33.84	-43.19	15 W (US Standard)
	2	AD-C42T (QSC Audio)	-27.55	-43.19	15 W (US Standard)
	3	AD-C42T (QSC Audio)	-20.48	-43.19	15 W (US Standard)
	4	AD-C42T (QSC Audio)	-13.40	-43.19	15 W (US Standard)

### Room: Storage Area





**Label:** Storage Area  
**Room Height:** 14.00 ft  
**Ear Height:** 4.00 ft  
**Network Voltage:** 70.7 V  
**Power Consumption:** 120W

Summary Loudspeakers:	Amount	Type
	4	AD-C42T (QSC Audio)

Room Layout:	Nr.	X [ft]	Y [ft]
	1	47.76	0.19
	2	53.76	0.19
	3	53.76	-35.81
	4	31.76	-35.81
	5	31.76	-25.81
	6	47.76	-25.81

Loudspeakers:	Nr.	Type	X [ft]	Y [ft]	Tap Settings
	1	AD-C42T (QSC Audio)	38.54	-31.19	30 W (US Standard)
	2	AD-C42T (QSC Audio)	47.17	-31.19	30 W (US Standard)
	3	AD-C42T (QSC Audio)	50.74	-20.12	30 W (US Standard)
	4	AD-C42T (QSC Audio)	50.63	-9.43	30 W (US Standard)