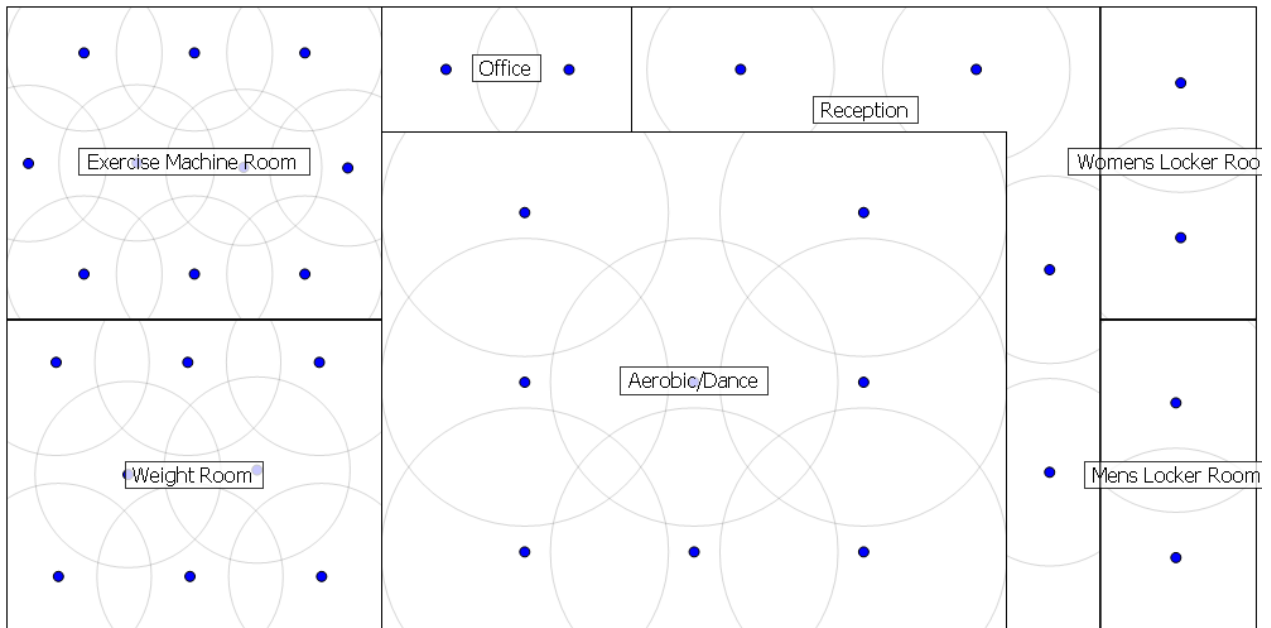


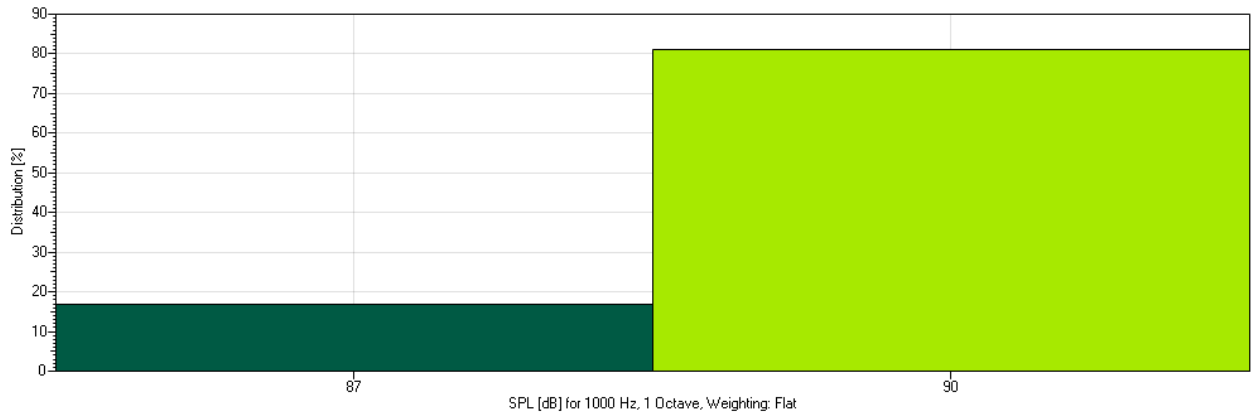
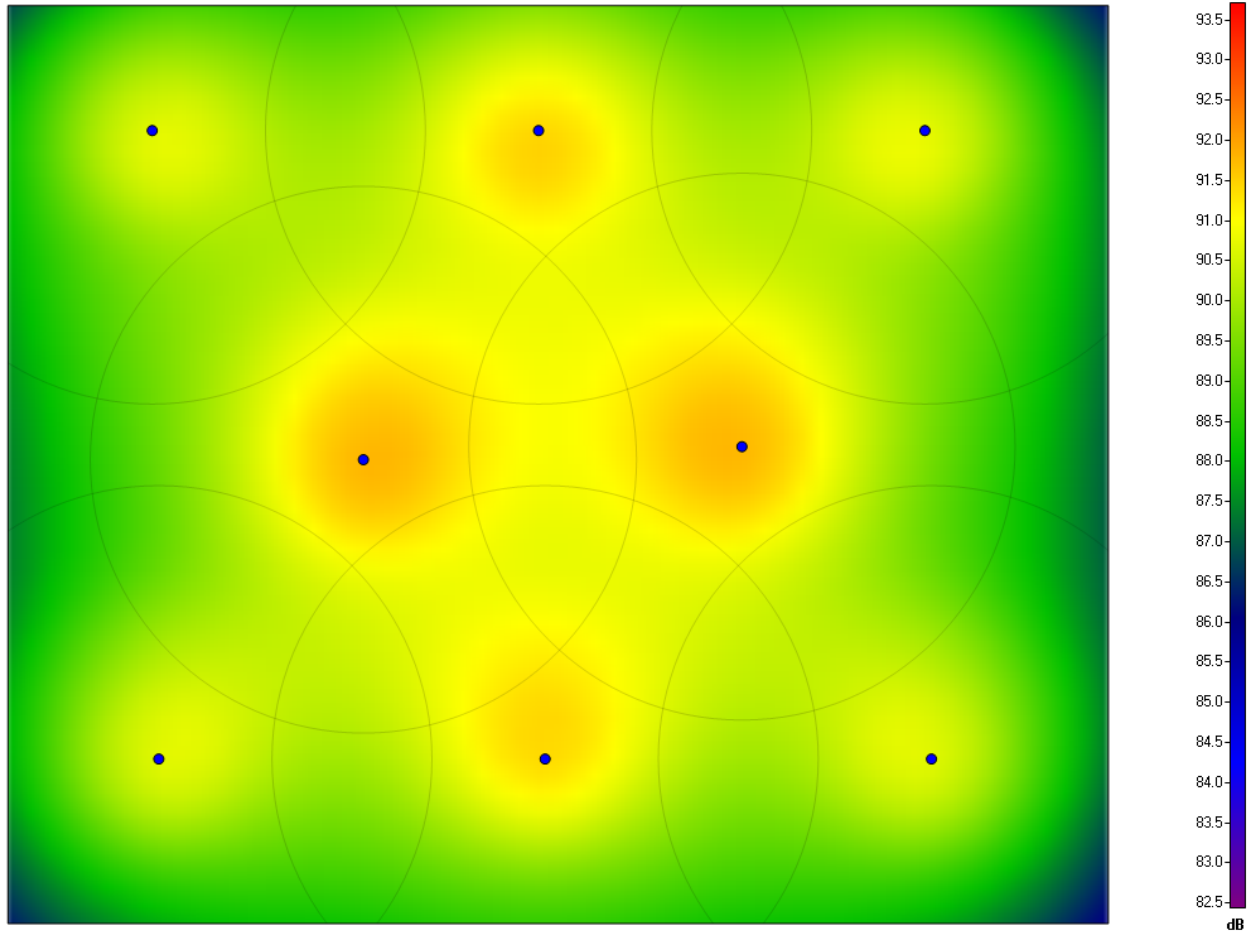
Project Information

Title:	New Project												
Author:	Joe Etrick												
Company:	QSC Audio Products, LLC												
Notes:	This project was modeled as an example of the use of the DSP322ua digital signal processor and accessories in a typical fitness club application. It was modeled in EASE Address which is available on the QSC website.												
Temperature:	68.0°F												
Pressure:	Standard (29.8 inHg)												
Humidity:	Standard (60%)												
Mapping:	1000 Hz (1 Octave), Weighting: Flat												
Input Signal Type:	Program (IEC 60268)												
Calculation Accuracy:	Fast Approximation												
Summary Loudspeakers:	<table border="1"> <thead> <tr> <th>Amount</th> <th>Type</th> </tr> </thead> <tbody> <tr> <td>10</td> <td>AD-CI52ST (QSC Audio)</td> </tr> <tr> <td>8</td> <td>AD-S282HT (QSC Audio)</td> </tr> <tr> <td>10</td> <td>AD-CI52T (QSC Audio)</td> </tr> <tr> <td>8</td> <td>AD-C42T (QSC Audio)</td> </tr> <tr> <td>4</td> <td>AD S28Tw (QSC Audio)</td> </tr> </tbody> </table>	Amount	Type	10	AD-CI52ST (QSC Audio)	8	AD-S282HT (QSC Audio)	10	AD-CI52T (QSC Audio)	8	AD-C42T (QSC Audio)	4	AD S28Tw (QSC Audio)
Amount	Type												
10	AD-CI52ST (QSC Audio)												
8	AD-S282HT (QSC Audio)												
10	AD-CI52T (QSC Audio)												
8	AD-C42T (QSC Audio)												
4	AD S28Tw (QSC Audio)												

Layout Overview



Room: Weight Room



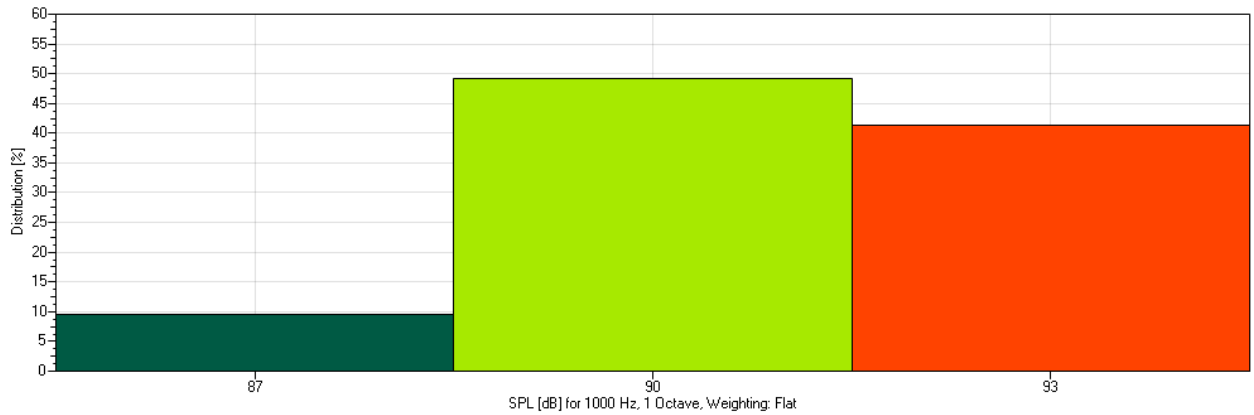
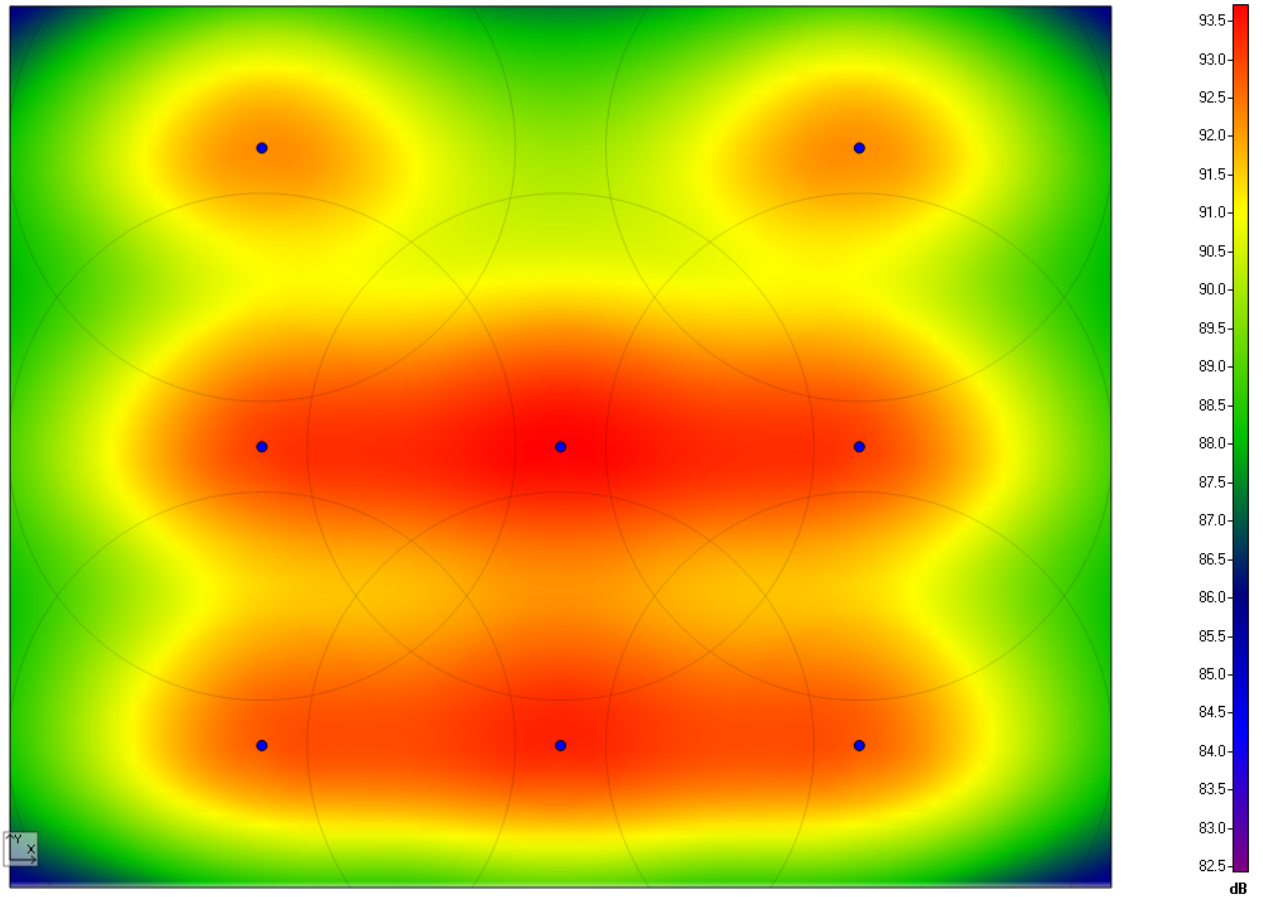
Label:	Weight Room
Room Height:	9.00 ft
Ear Height:	4.00 ft
Network Voltage:	70.7 V
Power Consumption:	120W
Summary Loudspeakers:	Amount Type

8 AD-CI52ST (QSC Audio)

Room Layout:	Nr.	X [ft]	Y [ft]
	1	-4.00	14.00
	2	-4.00	34.00
	3	-28.00	34.00
	4	-28.00	14.00

Loudspeakers:	Nr.	Type	X [ft]	Y [ft]	Tap Settings
	1	AD-CI52ST (QSC Audio)	-24.85	31.28	15 W (US Standard)
	2	AD-CI52ST (QSC Audio)	-16.43	31.28	15 W (US Standard)
	3	AD-CI52ST (QSC Audio)	-8.00	31.28	15 W (US Standard)
	4	AD-CI52ST (QSC Audio)	-24.71	17.58	15 W (US Standard)
	5	AD-CI52ST (QSC Audio)	-16.28	17.58	15 W (US Standard)
	6	AD-CI52ST (QSC Audio)	-7.86	17.58	15 W (US Standard)
	7	AD-CI52ST (QSC Audio)	-20.25	24.11	15 W (US Standard)
	8	AD-CI52ST (QSC Audio)	-11.99	24.39	15 W (US Standard)

Room: Aerobic/Dance

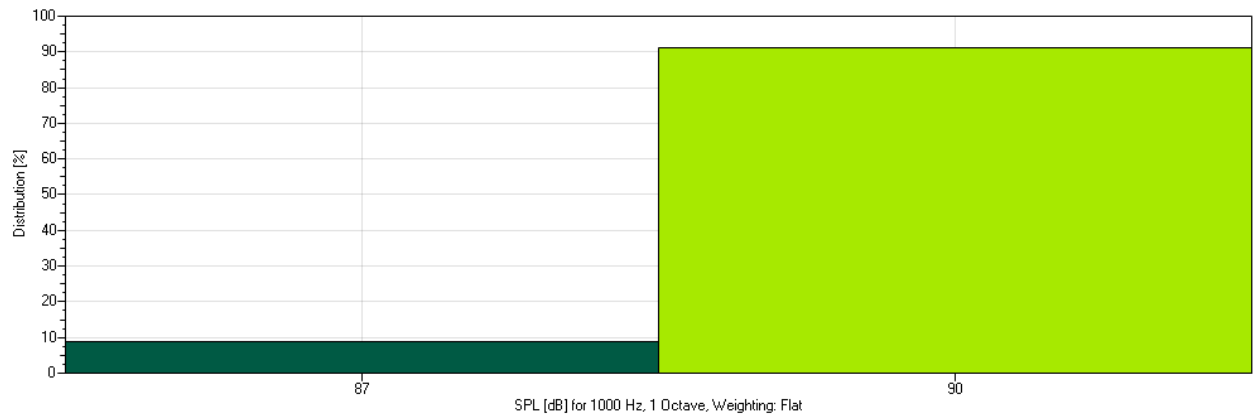
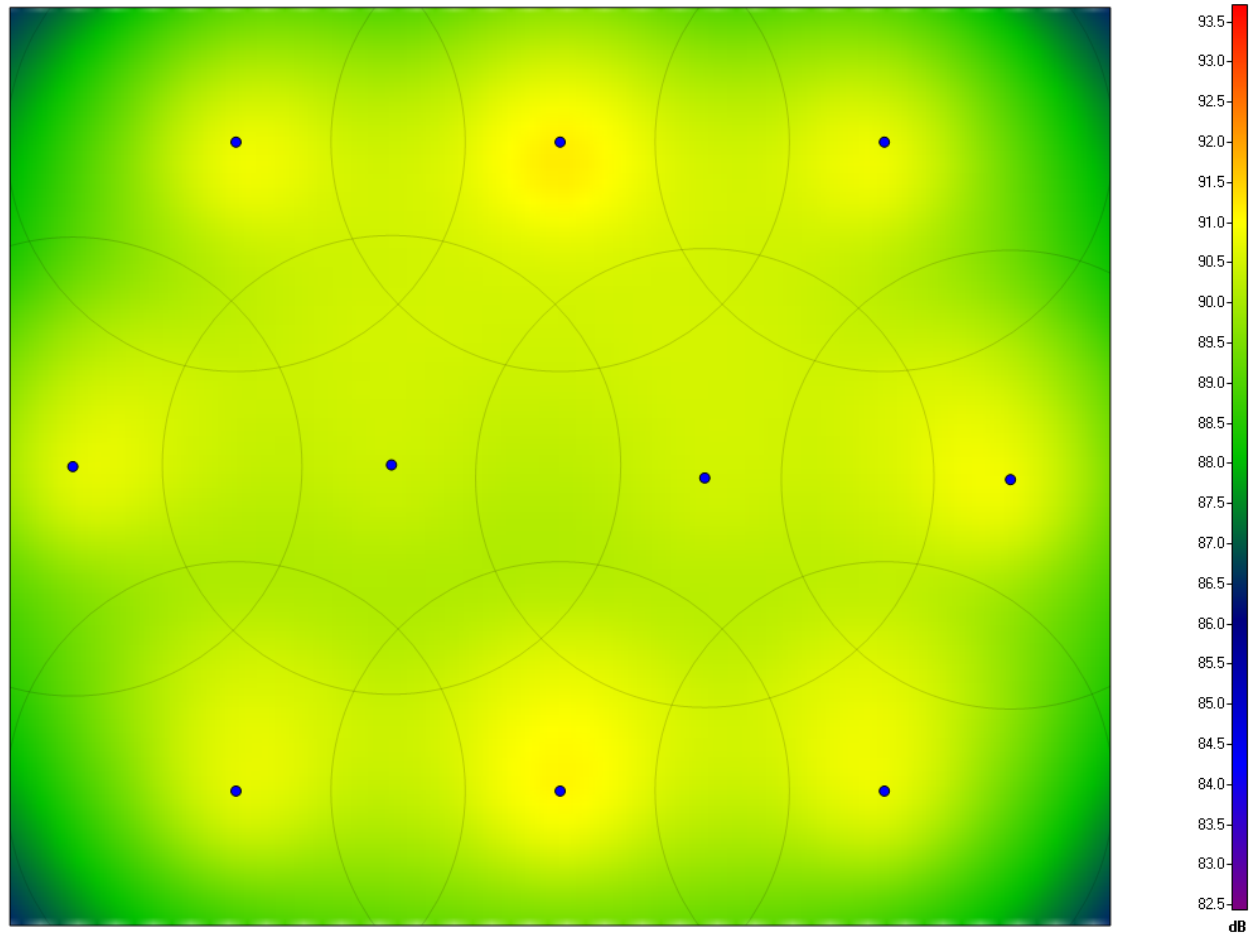


Label:	Aerobic/Dance	
Room Height:	16.00 ft	
Ear Height:	4.00 ft	
Network Voltage:	70.7 V	
Power Consumption:	400W	
Summary Loudspeakers:	Amount	Type
	8	AD-S282HT (QSC Audio)

Room Layout:	Nr.	X [ft]	Y [ft]
	1	0.00	30.99
	2	40.00	30.99
	3	40.00	-1.01
	4	0.00	-1.01

Loudspeakers:	Nr.	Type	X [ft]	Y [ft]	Tap Settings
	1	AD-S282HT (QSC Audio)	9.15	25.85	50 W (US Standard)
	2	AD-S282HT (QSC Audio)	30.85	25.85	50 W (US Standard)
	3	AD-S282HT (QSC Audio)	9.15	15.00	50 W (US Standard)
	4	AD-S282HT (QSC Audio)	20.00	15.00	50 W (US Standard)
	5	AD-S282HT (QSC Audio)	30.85	15.00	50 W (US Standard)
	6	AD-S282HT (QSC Audio)	9.15	4.15	50 W (US Standard)
	7	AD-S282HT (QSC Audio)	20.00	4.15	50 W (US Standard)
	8	AD-S282HT (QSC Audio)	30.85	4.15	50 W (US Standard)

Room: Exercise Machine Room



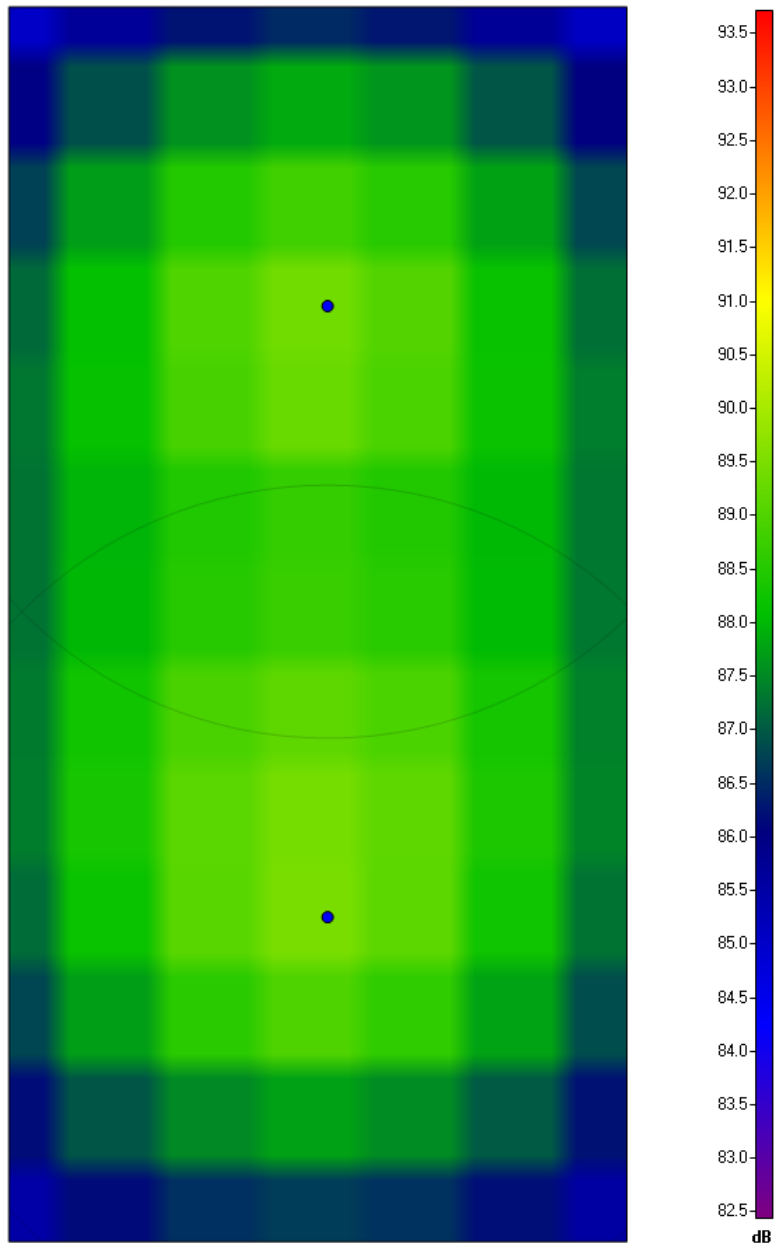
Label:	Exercise Machine Room
Room Height:	9.00 ft
Ear Height:	4.00 ft
Network Voltage:	70.7 V
Power Consumption:	128W
Summary Loudspeakers:	Amount Type

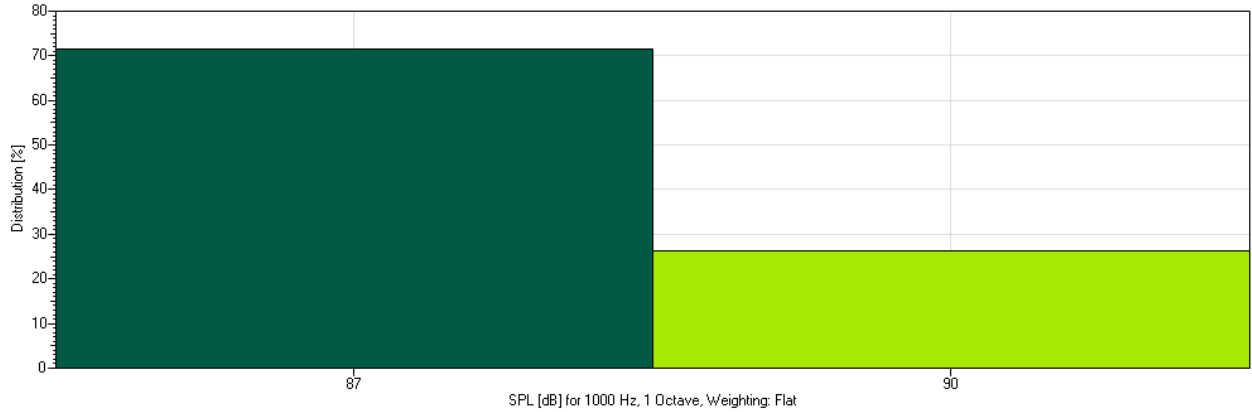
10 AD-C52 (QSC Audio)

Room Layout:	Nr.	X [ft]	Y [ft]
	1	-14.00	-6.00
	2	-14.00	-26.00
	3	-38.00	-26.00
	4	-38.00	-6.00

Loudspeakers:	Nr.	Type	X [ft]	Y [ft]	Tap Settings
	1	AD-CI52T (QSC Audio)	-33.07	-8.93	15 W (US Standard)
	2	AD-CI52T (QSC Audio)	-26.00	-8.93	15 W (US Standard)
	3	AD-CI52T (QSC Audio)	-18.93	-8.93	15 W (US Standard)
	4	AD-CI52T (QSC Audio)	-36.63	-16.00	15 W (US Standard)
	5	AD-CI52T (QSC Audio)	-16.18	-16.28	15 W (US Standard)
	6	AD-CI52T (QSC Audio)	-33.07	-23.07	15 W (US Standard)
	7	AD-CI52T (QSC Audio)	-26.00	-23.07	15 W (US Standard)
	8	AD-CI52T (QSC Audio)	-18.93	-23.07	15 W (US Standard)
	9	AD-CI52T (QSC Audio)	-29.68	-15.96	3.8 W (US Standard)
	10	AD-CI52T (QSC Audio)	-22.85	-16.25	3.8 W (US Standard)

Room: Womens Locker Room



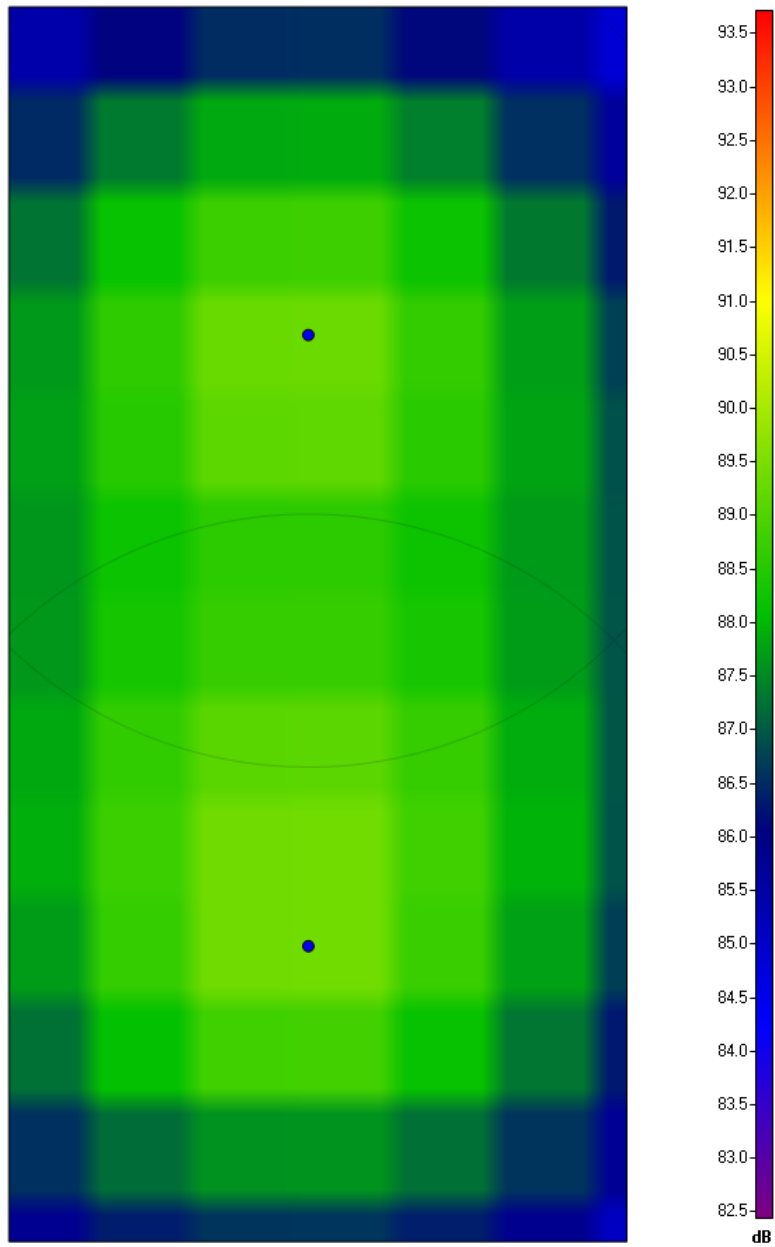


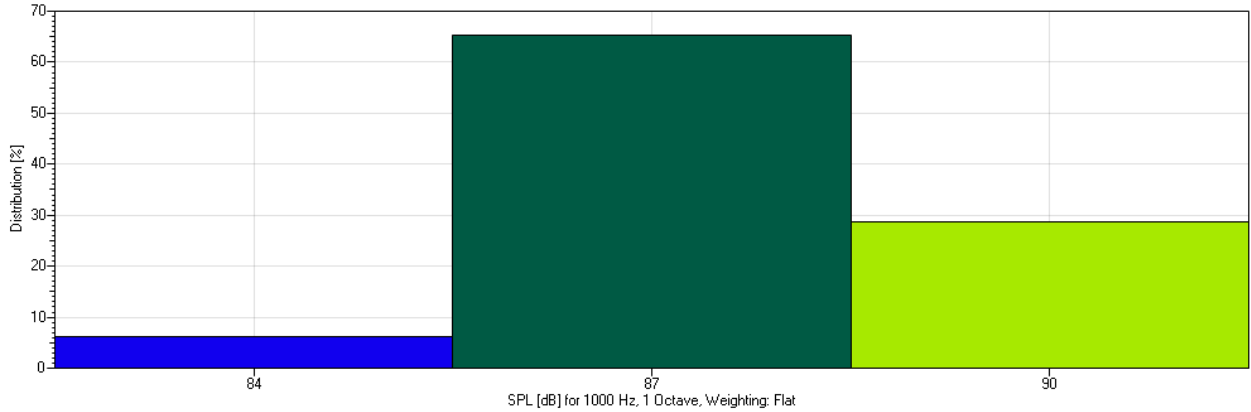
Label:	Womens Locker Room
Room Height:	11.00 ft
Ear Height:	4.00 ft
Network Voltage:	70.7 V
Power Consumption:	60W
Summary Loudspeakers:	
	Amount Type
	2 AD-C42T (QSC Audio)

Room Layout:	Nr.	X [ft]	Y [ft]
	1	72.00	6.31
	2	82.00	6.31
	3	82.00	-13.69
	4	72.00	-13.69

Loudspeakers:	Nr.	Type	X [ft]	Y [ft]	Tap Settings
	1	AD-C42T (QSC Audio)	77.16	1.47	30 W (US Standard)
	2	AD-C42T (QSC Audio)	77.16	-8.43	30 W (US Standard)

Room: Mens Locker Room





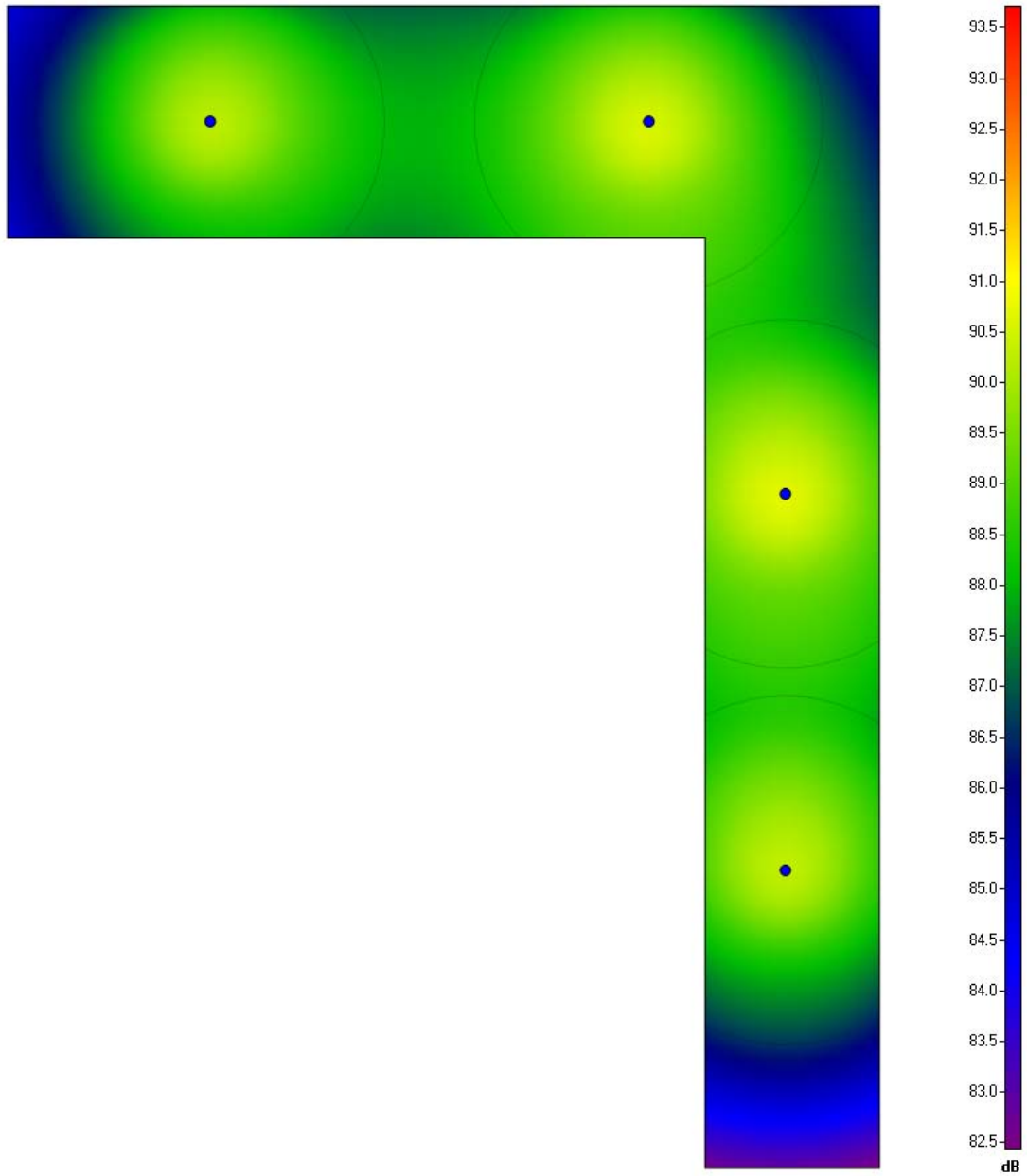
Label: Mens Locker Room
Room Height: 11.00 ft
Ear Height: 4.00 ft
Network Voltage: 70.7 V
Power Consumption: 60W

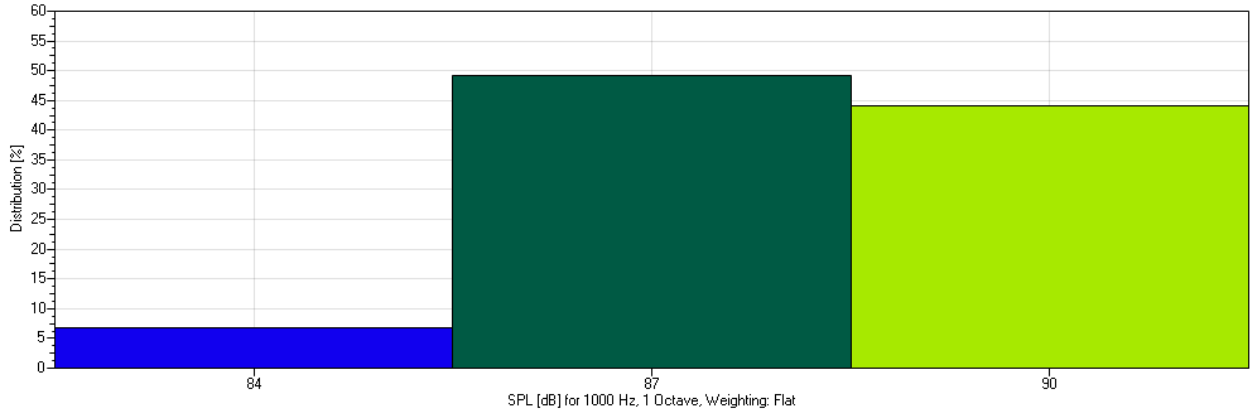
Summary Loudspeakers:	Amount	Type
	2	AD-C42T (QSC Audio)

Room Layout:	Nr.	X [ft]	Y [ft]
	1	60.00	20.00
	2	70.00	20.00
	3	70.00	0.00
	4	60.00	0.00

Loudspeakers:	Nr.	Type	X [ft]	Y [ft]	Tap Settings
	1	AD-C42T (QSC Audio)	64.84	14.69	30 W (US Standard)
	2	AD-C42T (QSC Audio)	64.84	4.79	30 W (US Standard)

Room: Reception





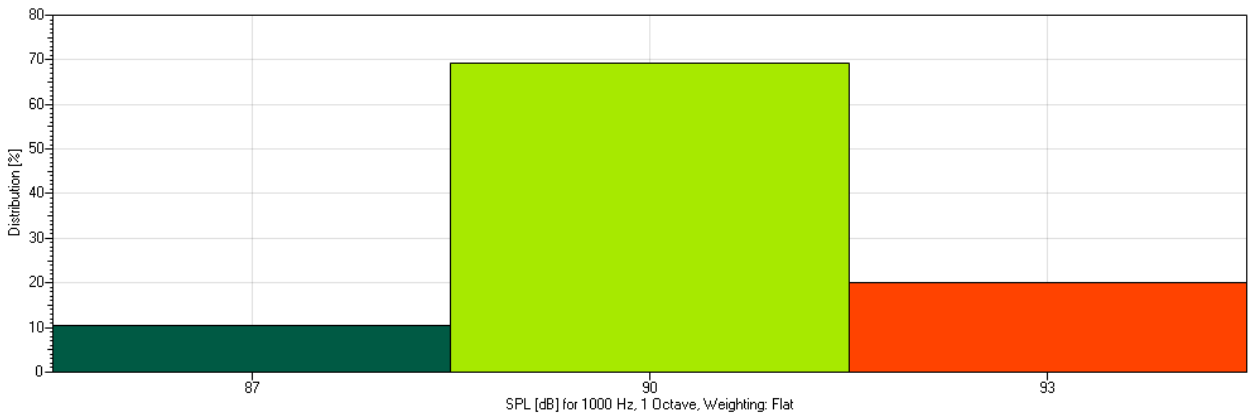
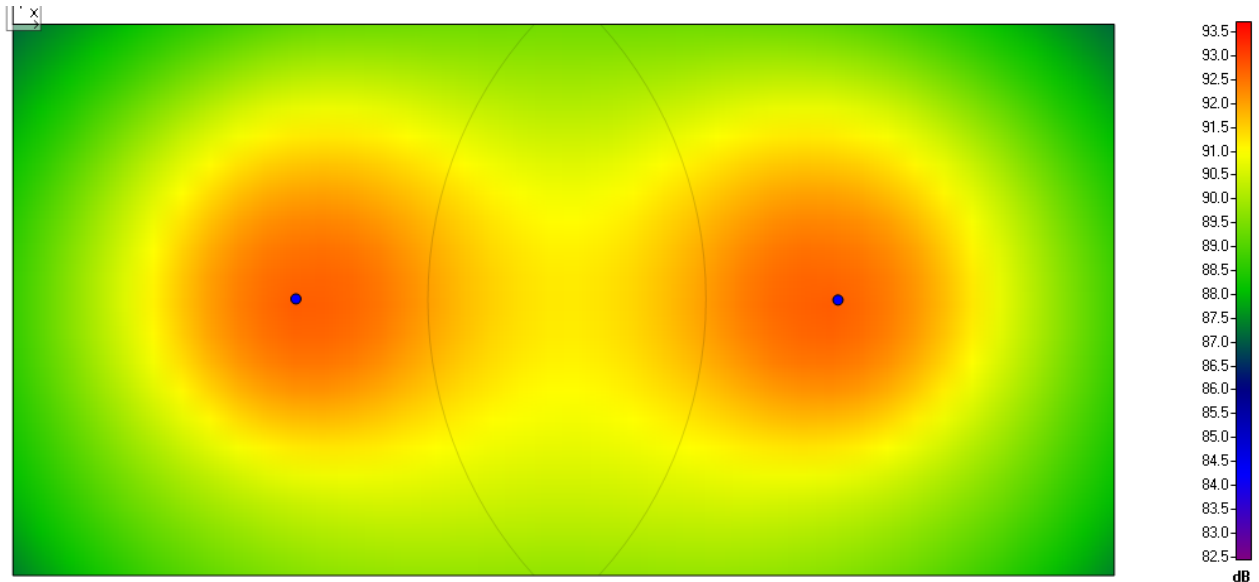
Label: Reception
Room Height: 10.00 ft
Ear Height: 4.00 ft
Network Voltage: 70.7 V
Power Consumption: 120W

Summary Loudspeakers:	Amount	Type
	4	AD-C42T (QSC Audio)

Room Layout:	Nr.	X [ft]	Y [ft]
	1	42.00	40.00
	2	72.00	40.00
	3	72.00	0.00
	4	66.00	0.00
	5	66.00	32.00
	6	42.00	32.00

Loudspeakers:	Nr.	Type	X [ft]	Y [ft]	Tap Settings
	1	AD-C42 (QSC Audio)	48.97	36.02	30 W (US Standard)
	2	AD-C42 (QSC Audio)	64.06	36.02	30 W (US Standard)
	3	AD-C42 (QSC Audio)	68.76	23.20	30 W (US Standard)
	4	AD-C42 (QSC Audio)	68.76	10.25	30 W (US Standard)

Room: Office



Label:	Office
Room Height:	9.00 ft
Ear Height:	4.00 ft
Network Voltage:	70.7 V
Power Consumption:	60W
Summary Loudspeakers:	
	Amount Type
	2 AD-CI52ST (QSC Audio)

Room Layout:	Nr.	X [ft]	Y [ft]
	1	0.00	0.00
	2	16.00	0.00
	3	16.00	-8.00
	4	0.00	-8.00

Loudspeakers:	Nr.	Type	X [ft]	Y [ft]	Tap Settings
	1	AD-CI52ST (QSC Audio)	11.99	-4.00	30 W (US Standard)
	2	AD-CI52ST (QSC Audio)	4.11	-3.98	30 W (US Standard)

