



Q-SYS Networked Systems Technical Notes

Q-SYS Core Processors and Peripherals

The Q-SYS Media Drive

The purpose of this technical note is to explain the Q-SYS Core Processor models' onboard media playback systems, covering these three topics:

- Audio storage of the Q-SYS Core Processor models
- Media upgrade options available for each model
- Upgrading to larger playback options

Core model default storage

A Q-SYS Core Processor's default media drive and multi-track player (MTP) provides up to 16 individual playback channels stored on an internal solid state drive. All storage space not occupied by the operating system is available for media. All Q-SYS media drives can reproduce WAV, MP3, and FLAC audio files—at 8, 16, 24, and 32 bits, fixed or floating point—with sample rates ranging from 8 kHz to 96 kHz.

Available media drive upgrades and their storage capacities

- **Small Media Drive (MD-S)**—Provides a minimum of 130 hours (80 GB) of audio storage (24-bit, 48 kHz mono WAV file).
- **Medium Media Drive (MD-M)**—Provides a minimum of 260 hours (160 GB) of audio storage (24-bit, 48 kHz mono WAV file).
- **Large Media Drive (MD-L)**—Provides a minimum of 1200 hours (600 GB) of audio storage (24-bit, 48 kHz mono WAV file).
- **Media Drive MD-110**—For the Core 110f only. Provides a minimum of 200 hours (128 GB) of audio storage (24-bit, 48 kHz mono WAV file).

All media drive options can be installed in the field by any technician with a basic understanding of computer hardware. Installation instructions are included with the drive.

Multi-track player (MTP)

The MTP plays simultaneous mono or stereo files, as well as multi-track WAV files. These are the available options:

- **MTP-32**—32 tracks
- **MTP-64**—64 tracks (not available for Core 110f)
- **MTP-128**—128 tracks (not available for Core 110f)

NOTE: For an MTP to play more than 16 tracks, its Core Processor must have an upgraded media drive and an applicable MTP key.

Purchasing and installing an MTP key

The following procedure is for Q-SYS Core Processor units with pre-version 7.0 firmware. For units with firmware version 7.0 or later, please see the Q-SYS Platform Technical Note *How to Activate a QSC Feature License*.

To purchase a key for an upgraded MTP, send an e-mail message to qsysupport@qsc.com. Include the Core Hardware ID and attach a copy of the sales receipt (a legible scan is acceptable). To look up the Core Hardware ID, open Q-SYS Designer and go to **Tools>Show Q-Sys Configurator ...**. Click on the Core Processor's icon to open the information page where the ID is

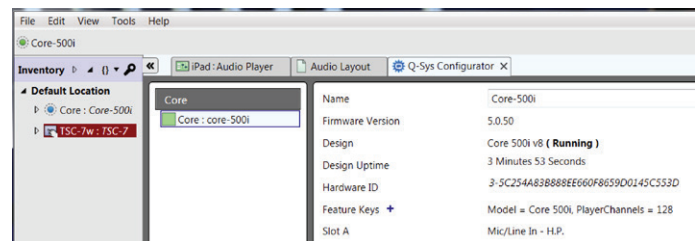


Figure 1.

displayed (see Figure 1); you might need to enter a password if the Core Processor has been secured.

When you receive the 50-digit upgrade key via e-mail from QSC, go to the core unit's information page in Q-SYS Configurator and click on **+**, next to **Feature Keys** (Figure 2). Copy and paste the key into the **Add Feature Key** box. If the key is valid the box will display in green text the new feature you are enabling (Figure 3). Click **OK**. The **Feature Keys** line lists all keys enabled on the core unit.

NOTE: Each Feature Key is only valid for a specific Core Hardware ID and cannot be copied or transferred to other Core Processor units.

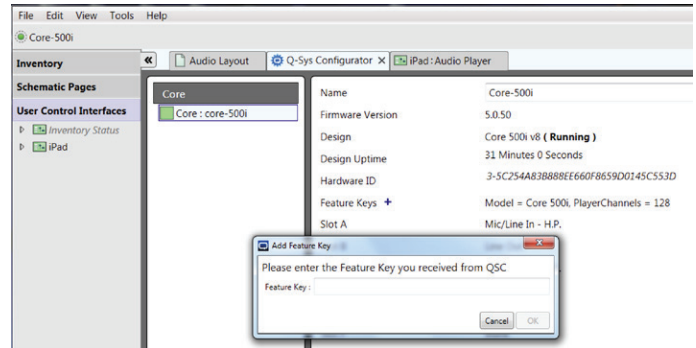


Figure 2.

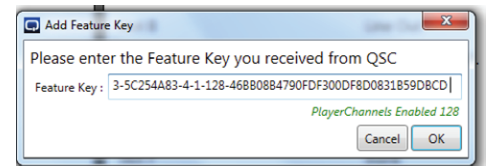


Figure 3.